

**CORRECTIVE SERVICES**

AUSTRALIA

EMBARGO: 11.30AM (CANBERRA TIME) THURS 20 SEP 2007

**C O N T E N T S**

	<i>page</i>
Notes .....	2
Summary of findings .....	3

**T A B L E S**

<b>1</b> Persons in corrective services, quarterly comparisons .....	8
<b>2</b> Persons in full-time custody .....	10
<b>3</b> Imprisonment rates .....	11
<b>4</b> Persons in full-time custody, by sex .....	12
<b>5</b> Imprisonment rates, by sex .....	13
<b>6</b> Indigenous persons in full-time custody, by sex .....	14
<b>7</b> Indigenous imprisonment rates, by sex .....	15
<b>8</b> Persons in full-time custody, by type of custody .....	16
<b>9</b> Imprisonment rates, by type of custody .....	17
<b>10</b> Persons in full-time custody, by legal status .....	18
<b>11</b> Imprisonment rates, by legal status .....	19
<b>12</b> Indigenous persons in full-time custody, by legal status .....	20
<b>13</b> Indigenous imprisonment rates, by legal status .....	21
<b>14</b> Sentenced prisoner receptions into full-time custody .....	22
<b>15</b> Persons in periodic detention, by sex .....	23
<b>16</b> Federal sentenced persons in full-time custody, by sex .....	24
<b>17</b> Persons in community-based corrections, by sex .....	25
<b>18</b> Community-based corrections rates, by sex .....	26
<b>19</b> Persons in community-based corrections, by type of order .....	27

**A D D I T I O N A L I N F O R M A T I O N**

Explanatory Notes .....	29
Appendix Experimental Community-Based Corrections Data .....	36
Glossary .....	40

**I N Q U I R I E S**

For further information about these and related statistics, contact the National Information and Referral Service on 1300 135 070 or Terence Byrnes on Melbourne (03) 9615 7681.

# NOTES

## FORTHCOMING ISSUES

*ISSUE (Quarter)*

*RELEASE DATE*

September 2007

29 November 2007



## ABOUT THIS PUBLICATION

This publication presents information on persons in custody and community-based corrections. The statistics are derived from information provided to the Australian Bureau of Statistics (ABS) from administrative records held by corrective services agencies in each state and territory, and from the Australian Government Attorney-General's Department for details on federal prisoners. Details are provided for each state and territory on: prisoner numbers and imprisonment rates by type of custody (i.e. open or secure custody or periodic detention); prisoner numbers by legal status (sentenced or unsentenced) for all prisoners and for Indigenous prisoners; the number of sentenced receptions into custody; the number of federal prisoners; and the numbers and rates of persons serving community-based corrections orders. Experimental data on the Indigenous status of persons in community-based corrections are also included in the Appendix.

The ABS acknowledges the valuable contribution of the Board of Management and the Advisory Group of the National Corrective Services Statistics Unit as well as the staff of the various agencies that provide the statistics that are presented in this publication.

## CHANGES IN THIS ISSUE

Rates for total adult population presented for the June quarter 2007 have been calculated using preliminary rebased December quarter 2006 estimated resident population (ERP). Estimates have been rebased using information from the 2006 Census of Population and Housing. For further information see Explanatory Notes, paragraphs 24-29.

## FURTHER INFORMATION

More information about ABS activities in the field of crime and justice statistics is available from the Crime and Justice theme page on the ABS website <[www.abs.gov.au](http://www.abs.gov.au)>. Details of other ABS publications relating to Crime and Justice statistics can be found in paragraphs 43-44 of the Explanatory Notes.



## ABBREVIATIONS

- ABS Australian Bureau of Statistics
- ACT Australian Capital Territory
- Aust. Australia
- ERP estimated resident population
- NCCJS National Centre for Crime and Justice Statistics, Australian Bureau of Statistics
- NSW New South Wales
- NT Northern Territory
- Qld Queensland
- SA South Australia
- Tas. Tasmania
- Vic. Victoria
- WA Western Australia

Brian Pink  
Australian Statistician

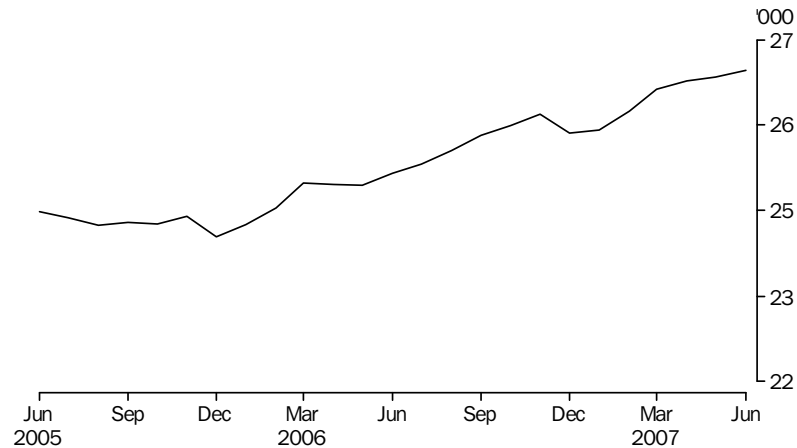
## SUMMARY OF FINDINGS

### PERSONS IN CORRECTIVE SERVICES

Based on first day of the month averages, for the June quarter 2007 there were 78,652 persons under the authority of corrective services (excluding those in periodic detention). The total comprised 26,426 persons in full-time custody and 52,226 persons in community-based corrections. This represents an increase of less than 2% (1,535 persons) from the June quarter 2006. From the June quarter 2006, persons in full-time custody increased by 6% (1,521 persons) and persons in community-based corrections increased by less than 1% (14 persons).

### PERSONS IN CUSTODY Number of prisoners

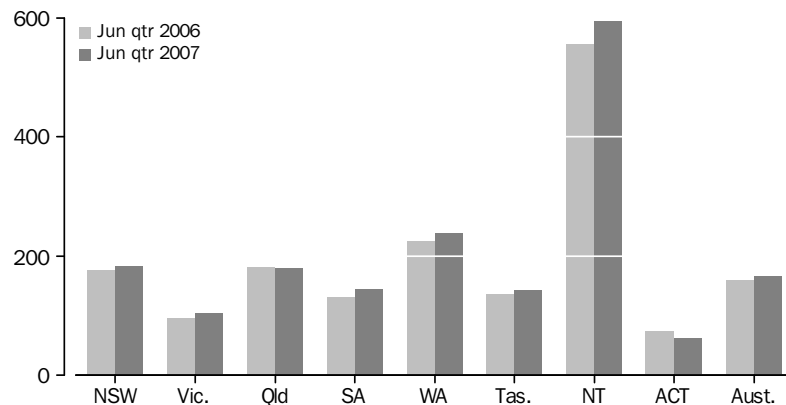
#### PERSONS IN PRISON CUSTODY, Average daily number per month



The average daily number of full-time prisoners in Australia in the June quarter 2007 was 26,466. There was an increase of 2% on the March quarter 2007 and an increase of 6% from the June quarter 2006.

### Rates per 100,000 adults

#### AVERAGE DAILY IMPRISONMENT RATE (a), By State and Territory



(a) Rate per 100,000 adult population.

Nationally, the June quarter 2007 average daily imprisonment rate was 166 prisoners per 100,000 adult population, an increase of 4% from the June quarter 2006 (159 prisoners). The Northern Territory had the highest imprisonment rate (594 prisoners per 100,000 adult population), followed by Western Australia (238) and New South Wales (182).

The Australian Capital Territory (including Australian Capital Territory prisoners held in New South Wales prisons) and Victoria had the lowest imprisonment rates (63 and 104 prisoners per 100,000 adults respectively).

## SUMMARY OF FINDINGS *continued*

*Rates per 100,000 adults  
continued*

The largest proportional increase in imprisonment rates from the June quarter 2006 was recorded in South Australia (11%). The largest proportional decrease over the same period was recorded in the Australian Capital Territory (including Australian Capital Territory prisoners held in New South Wales prisons) (16%).

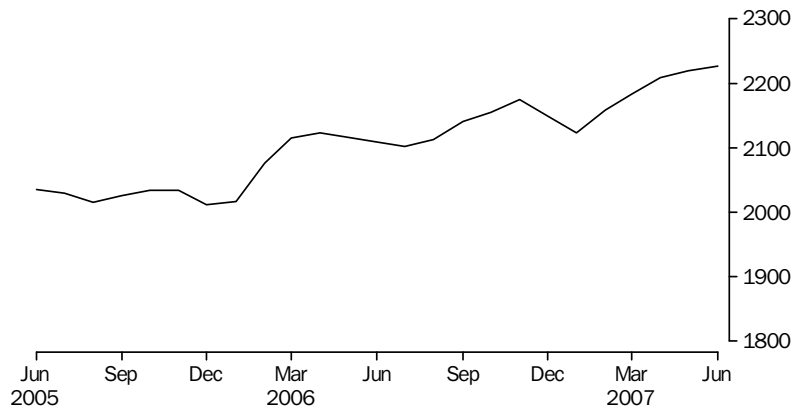
*Sex*

Of the average daily number of full-time prisoners in Australia in the June quarter 2007, 24,544 (93%) were male and 1,922 (7%) were female. The average daily imprisonment rate for males was 312 prisoners per 100,000 adult male population, while for females it was 24 prisoners per 100,000 adult female population. Males were more than 13 times more likely to be in prison than females.

*Indigenous Prisoners*

The average daily number of full-time Indigenous adult prisoners in Australia in the June quarter 2007 was 6,521, comprising 5,913 (91%) males and 608 (9%) females. Almost 80% of the total Indigenous prisoner population was located in New South Wales (1,984), Western Australia (1,599) and Queensland (1,526).

**AVERAGE DAILY INDIGENOUS IMPRISONMENT RATE(a), Per month**



(a) Rate per 100,000 adult Indigenous population.

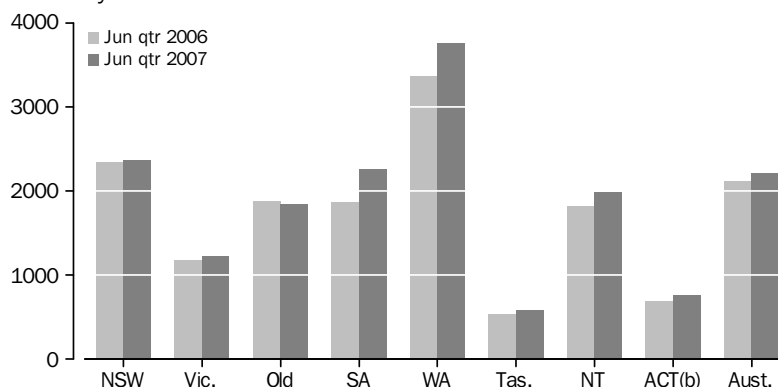
The national average daily Indigenous imprisonment rate in the June quarter 2007 was 2,219 per 100,000 adult Indigenous population, an increase of 3% from the previous quarter and an increase of 5% from the June quarter 2006.

The highest Indigenous imprisonment rate was recorded in Western Australia (3,761 Indigenous prisoners per 100,000 adult Indigenous population), followed by New South Wales (2,368).

## SUMMARY OF FINDINGS *continued*

### *Indigenous Prisoners continued*

AVERAGE DAILY INDIGENOUS IMPRISONMENT RATE(a), By State and Territory



(a) Rate per 100,000 adult Indigenous population.

(b) Apparent variations in ACT rates may be as a result of small counts, see tables 6 and 7.

The largest proportional increase in the Indigenous imprisonment rate from the June quarter 2006 was recorded in South Australia (21%).

Different age profiles of the Indigenous and non-Indigenous population can affect the imprisonment rate numbers. The quarterly collection is unable to take age into account; however, data from the Prisoner Census collection can provide this level of detail.

The national age standardised Indigenous imprisonment rate from the annual Prisoner Census conducted at June 2006 was 13 times higher (1,668 per 100,000 adult Indigenous population) than the rate for non-Indigenous persons (130 per 100,000 adult non-Indigenous population). Further information on the comparison of imprisonment rates between Indigenous and non-Indigenous populations can be found in *Prisoners in Australia 2006* (cat.no.4517.0).

### *Type of full-time custody*

The average daily number of prisoners in secure prison custody in the June quarter 2007 was 20,114 (76% of prisoners in full-time custody). Open prison custody comprised 6,352 (24%) prisoners.

In the June quarter 2007, all prisoners held in full-time custody in the Australian Capital Territory were in secure custody. Of the other states and territories, Victoria, South Australia and Tasmania had the highest proportion of prisoners in secure custody (90%, 89% and 89% respectively). New South Wales (including Australian Capital Territory prisoners held in New South Wales prisons) had the lowest proportion of prisoners in secure full-time custody (61%).

### *Legal status*

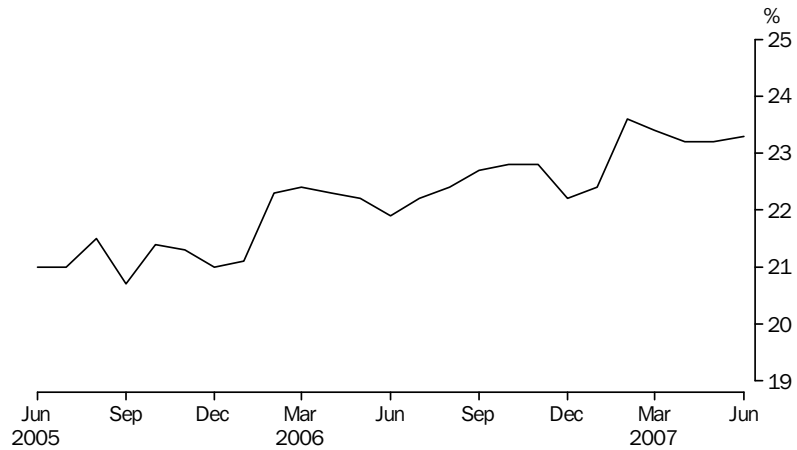
The average number of prisoners in full-time custody on the first day of each month in the June quarter 2007 was 26,426, comprising an average of 20,280 (77%) sentenced and 6,147 (23%) unsentenced prisoners. Sentenced prisoners increased by 2% from the previous quarter and 5% from the June quarter 2006. The average number of unsentenced prisoners on the first day of the month increased by 3% from the previous quarter and 11% from the June quarter 2006. The Australian Capital Territory (including Australian Capital Territory prisoners held in New South Wales prisons) and South Australia had the highest proportions of unsentenced prisoners (40% and 36%

## SUMMARY OF FINDINGS *continued*

*Legal status continued*

respectively). The lowest proportions of unsentenced prisoners were recorded in Western Australia and Victoria (18% and 19% respectively).

UNSENTENCED PERSONS IN PRISON CUSTODY, Proportion per month



*Sentenced Prisoner Receptions*

There were 6,701 sentenced prisoner receptions into full-time custody in Australia in the June quarter 2007. The number of sentenced receptions increased by 298 (5%) from the March quarter 2007, and increased by 563 (9%) from the June quarter 2006.

*Periodic detention*

Periodic detention is a form of custody or order where a sentenced prisoner is required to be held in custody on a part-time basis. This type of custody order is only used in New South Wales and the Australian Capital Territory. During the June quarter 2007 there was an average daily number of 769 persons in New South Wales and 66 persons in the Australian Capital Territory held in periodic detention. The rate of imprisonment for periodic detainees increased by 4% in New South Wales, and increased by 22% in the Australian Capital Territory from the March quarter 2007 to the June quarter 2007.

*Federal prisoners*

In the June quarter 2007, there were 648 federal prisoners in Australia, a decrease of 17 (less than 3%) from the June quarter 2006. More than half (393) of these federal prisoners were sentenced in New South Wales.

**PERSONS IN  
COMMUNITY-BASED  
CORRECTIONS**

Community-based corrections orders are non-custodial orders served under the authority of adult corrective services agencies and include restricted movement, fine option, community service, parole, bail, and sentenced probation. Unless otherwise specified figures are based on first day of the month. In the June quarter 2007, there were 52,226 persons in community-based corrections in Australia, an increase of 1% (546 persons) from the March quarter 2007 and an increase of less than 1% (14 persons) from the June quarter 2006.

*Sex*

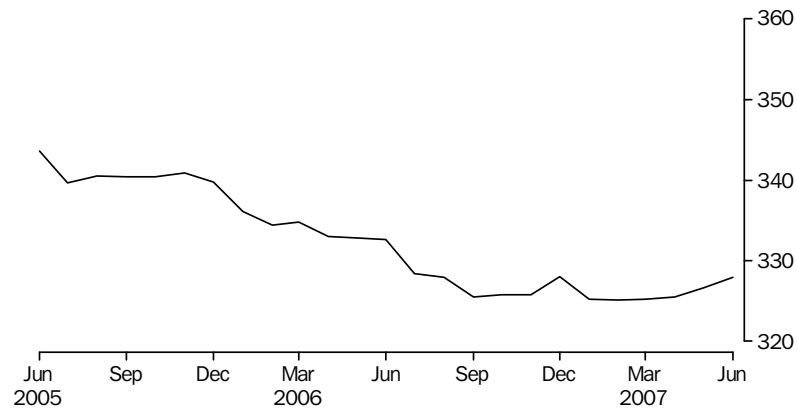
Of the average number of persons in community-based corrections in Australia in the June quarter 2007, 42,603 (82%) were male and 9,521 (18%) were female.

## SUMMARY OF FINDINGS *continued*

### Rates per 100,000 adults

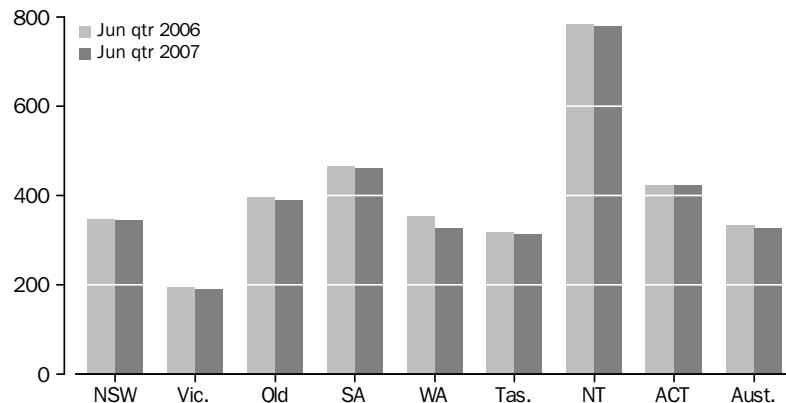
Nationally, the rate of persons in community-based corrections was 327 persons per 100,000 adult population for the June quarter 2007. This was a decrease of 2% from the June quarter 2006 (333 persons per 100,000 adults). The only state or territory to record an increase from the June quarter 2006 was the Australian Capital Territory (less than 1%). The largest decreases were recorded in Western Australia (7%) and Victoria (3%).

### COMMUNITY-BASED CORRECTIONS RATE(a), Per month



(a) Rate per 100,000 adult population.

### COMMUNITY-BASED CORRECTIONS RATE(a), By State and Territory



(a) Rate per 100,000 adult population.

In the June quarter 2007, the rate of community-based corrections for males was 541 per 100,000 adult male population compared to 117 females per 100,000 adult female population. Males were almost five times more likely to be in community-based corrections than females.

### Type of orders

In the June quarter 2007, there were 9,749 persons serving parole orders following a period of imprisonment, an increase of 4% from the March quarter 2007. More than three quarters (76%) of persons serving parole orders were located in three states: New South Wales (4,015 persons), Queensland (2,028) and Victoria (1,413).

For this same period, there were 32,571 persons under sentenced probation and 10,284 persons serving community service orders.

## PERSONS IN CORRECTIVE SERVICES, Quarterly comparisons(a)

	NSW(b)	Vic.	Qld	SA	WA	Tas.	NT	ACT in ACT(c)	ACT in NSW(b)	ACT Total(d)	Aust. (b)
AVERAGE DAILY NUMBER											
<b>Males in full-time custody</b>											
Jun Qtr 06	8 570	3 475	5 173	1 470	3 221	461	770	63	109	172	23 203
Mar Qtr 07	8 833	3 802	5 226	1 600	3 312	482	803	58	108	167	24 117
Jun Qtr 07	8 910	3 879	5 245	1 652	3 437	499	857	64	91	154	24 544
<b>Females in full-time custody</b>											
Jun Qtr 06	670	235	395	100	251	39	33	6	8	14	1 730
Mar Qtr 07	694	244	426	112	298	34	38	5	5	10	1 851
Jun Qtr 07	714	252	439	118	322	31	41	5	3	8	1 922
<b>Persons in full-time custody</b>											
Jun Qtr 06	9 241	3 710	5 568	1 569	3 472	501	804	69	118	186	24 933
Mar Qtr 07	9 527	4 046	5 651	1 712	3 610	516	841	63	113	176	25 968
Jun Qtr 07	9 623	4 132	5 684	1 770	3 759	531	898	69	94	163	26 466
<b>Indigenous persons in full-time custody</b>											
Jun Qtr 06	1 918	212	1 505	303	1 396	56	662	9	8	17	6 061
Mar Qtr 07	1 961	222	1 532	347	1 511	65	688	8	15	22	6 333
Jun Qtr 07	1 984	226	1 526	376	1 599	61	738	11	9	20	6 521
AVERAGE NUMBER ON FIRST DAY OF MONTH											
<b>Unsentenced persons in full-time custody</b>											
Jun Qtr 06	2 200	644	1 166	562	598	121	153	72	—	72	5 516
Mar Qtr 07	2 371	747	1 241	599	670	111	168	64	—	64	5 971
Jun Qtr 07	2 382	781	1 294	635	681	122	188	64	—	64	6 147
<b>Sentenced persons in full-time custody</b>											
Jun Qtr 06	7 059	3 027	4 363	1 014	2 882	380	663	—	118	118	19 389
Mar Qtr 07	7 127	3 271	4 374	1 100	2 901	394	663	—	109	109	19 830
Jun Qtr 07	7 247	3 336	4 391	1 147	3 036	407	714	1	96	97	20 280
<b>Persons in full-time custody</b>											
Jun Qtr 06	9 259	3 671	5 528	1 577	3 480	501	816	72	118	190	24 905
Mar Qtr 07	9 498	4 018	5 615	1 699	3 571	505	831	64	109	173	25 801
Jun Qtr 07	9 629	4 117	5 685	1 782	3 717	530	902	65	96	161	26 426
<b>Males in community-based corrections(e)</b>											
Jun Qtr 06	15 310	6 237	9 542	4 545	4 227	921	990	888	..	888	42 661
Mar Qtr 07	15 094	6 077	9 377	4 568	4 063	971	1 054	942	..	942	42 146
Jun Qtr 07	15 253	6 134	9 715	4 563	4 034	916	1 037	951	..	951	42 603
<b>Females in community-based corrections(e)</b>											
Jun Qtr 06	2 649	1 340	2 666	1 036	1 200	252	142	171	..	171	9 455
Mar Qtr 07	2 698	1 342	2 589	1 066	1 182	265	141	152	..	152	9 436
Jun Qtr 07	2 731	1 394	2 650	1 090	1 121	250	138	148	..	148	9 521
<b>Persons in community-based corrections(e)(f)</b>											
Jun Qtr 06	18 011	7 620	12 208	5 582	5 427	1 173	1 132	1 059	..	1 059	52 212
Mar Qtr 07	17 860	7 449	11 966	5 635	5 245	1 236	1 196	1 094	..	1 094	51 680
Jun Qtr 07	18 061	7 552	12 365	5 653	5 155	1 166	1 175	1 099	..	1 099	52 226

.. not applicable

— nil or rounded to zero (including null cells)

(a) For the calculation of quarterly figures – see Explanatory Notes, paragraph 5.

(b) Custodial data includes ACT prisoners held in NSW prisons. The ACT in NSW figures are a subset of the NSW figures and are not separately counted in the Australian totals – see Explanatory Notes, paragraph 19.

(c) Refers to unsentenced persons in ACT prison custody and may include some sentenced fine default only prisoners – see Explanatory Notes, paragraph 19.

(d) ACT in ACT figures and ACT in NSW figures may not add to ACT total due to rounding.

(e) With the exception of Vic. and Tas., includes persons with breached or suspended orders.

(f) Includes persons whose sex is unknown.



	NSW(b)	Vic.	Qld	SA	WA	Tas.	NT	ACT in ACT(c)	ACT in NSW(b)	ACT Total(d)	Aust. (b)
PERCENTAGE CHANGE (AVERAGE DAILY NUMBER)											
<b>Males in full-time custody</b>											
Jun Qtr 06 to Jun Qtr 07	4.0	11.6	1.4	12.4	6.7	8.2	11.3	1.6	-16.5	-10.5	5.8
Mar Qtr 07 to Jun Qtr 07	0.9	2.0	0.4	3.3	3.8	3.5	6.7	10.3	-15.7	-7.8	1.8
<b>Females in full-time custody</b>											
Jun Qtr 06 to Jun Qtr 07	6.6	7.2	11.1	18.0	28.3	-20.5	24.2	-16.7	-62.5	-42.9	11.1
Mar Qtr 07 to Jun Qtr 07	2.9	3.3	3.1	5.4	8.1	-8.8	7.9	—	-40.0	-20.0	3.8
<b>Persons in full-time custody</b>											
Jun Qtr 06 to Jun Qtr 07	4.1	11.4	2.1	12.8	8.3	6.0	11.7	—	-20.3	-12.4	6.1
Mar Qtr 07 to Jun Qtr 07	1.0	2.1	0.6	3.4	4.1	2.9	6.8	9.5	-16.8	-7.4	1.9
<b>Indigenous persons in full-time custody</b>											
Jun Qtr 06 to Jun Qtr 07	3.4	6.6	1.4	24.1	14.5	8.9	11.5	22.2	12.5	17.6	7.6
Mar Qtr 07 to Jun Qtr 07	1.2	1.8	-0.4	8.4	5.8	-6.2	7.3	37.5	-40.0	-9.1	3.0

PERCENTAGE CHANGE (AVERAGE NUMBER ON FIRST DAY OF MONTH)

<b>Unsentenced persons in full-time custody</b>											
Jun Qtr 06 to Jun Qtr 07	8.3	21.3	11.0	13.0	13.9	0.8	22.9	-11.1	—	-11.1	11.4
Mar Qtr 07 to Jun Qtr 07	0.5	4.6	4.3	6.0	1.6	9.9	11.9	—	—	—	2.9
<b>Sentenced persons in full-time custody</b>											
Jun Qtr 06 to Jun Qtr 07	2.7	10.2	0.6	13.1	5.3	7.1	7.7	—	-18.6	-17.8	4.6
Mar Qtr 07 to Jun Qtr 07	1.7	2.0	0.4	4.3	4.7	3.3	7.7	—	-11.9	-11.0	2.3
<b>Persons in full-time custody</b>											
Jun Qtr 06 to Jun Qtr 07	4.0	12.1	2.8	13.0	6.8	5.8	10.5	-9.7	-18.6	-15.3	6.1
Mar Qtr 07 to Jun Qtr 07	1.4	2.5	1.2	4.9	4.1	5.0	8.5	1.6	-11.9	-6.9	2.4
<b>Males in community-based corrections(e)</b>											
Jun Qtr 06 to Jun Qtr 07	-0.4	-1.7	1.8	0.4	-4.6	-0.5	4.7	7.1	..	7.1	-0.1
Mar Qtr 07 to Jun Qtr 07	1.1	0.9	3.6	-0.1	-0.7	-5.7	-1.6	1.0	..	1.0	1.1
<b>Females in community-based corrections(e)</b>											
Jun Qtr 06 to Jun Qtr 07	3.1	4.0	-0.6	5.2	-6.6	-0.8	-2.8	-13.5	..	-13.5	0.7
Mar Qtr 07 to Jun Qtr 07	1.2	3.9	2.4	2.3	-5.2	-5.7	-2.1	-2.6	..	-2.6	0.9
<b>Persons in community-based corrections(e)(f)</b>											
Jun Qtr 06 to Jun Qtr 07	0.3	-0.9	1.3	1.3	-5.0	-0.6	3.8	3.8	..	3.8	—
Mar Qtr 07 to Jun Qtr 07	1.1	1.4	3.3	0.3	-1.7	-5.7	-1.8	0.5	..	0.5	1.1

.. not applicable

— nil or rounded to zero (including null cells)

(a) For the calculation of quarterly figures – see Explanatory Notes, paragraph 5.

(b) Custodial data includes ACT prisoners held in NSW prisons. The ACT in NSW figures are a subset of the NSW figures and are not separately counted in the Australian totals – see Explanatory Notes, paragraph 19.

(c) Refers to unsentenced persons in ACT prison custody and may include some sentenced fine default only prisoners – see Explanatory Notes, paragraph 19.

(d) ACT in ACT figures and ACT in NSW figures may not add to ACT total due to rounding.

(e) With the exception of Vic. and Tas., includes persons with breached or suspended orders.

(f) Includes persons whose sex is unknown.

## PERSONS IN FULL-TIME CUSTODY

	NSW(a)	Vic. (b)	Qld	SA	WA	Tas.	NT	ACT in ACT(c)	ACT in NSW(a)(d)	ACT Total(e)	Aust. (a)(b)
AVERAGE DAILY NUMBER											
<b>2004</b>	8 654	3 595	5 283	1 473	3 161	483	727	68	118	186	23 444
<b>2005</b>	9 043	3 610	5 351	1 521	3 445	526	791	66	119	185	24 353
<b>2006</b>	9 281	3 825	5 569	1 590	3 517	518	803	66	115	181	25 169
<b>2006</b>											
Jun Qtr	9 241	3 710	5 568	1 569	3 472	501	804	69	118	186	24 933
Sep Qtr	9 300	3 970	5 601	1 597	3 542	546	771	60	107	167	25 387
Dec Qtr	9 415	4 029	5 655	1 647	3 579	544	825	65	109	174	25 759
<b>2007</b>											
Mar Qtr	9 527	4 046	5 651	1 712	3 610	516	841	63	113	176	25 968
Jun Qtr	9 623	4 132	5 684	1 770	3 759	531	898	69	94	163	26 466
<b>2006</b>											
Apr	9 284	3 648	5 524	1 562	3 469	491	831	76	118	194	24 884
May	9 233	3 666	5 587	1 568	3 448	502	797	71	119	190	24 872
Jun	9 205	3 818	5 592	1 578	3 500	509	783	59	117	176	25 045
Jul	9 237	3 929	5 574	1 566	3 513	530	776	59	113	172	25 185
Aug	9 304	3 973	5 585	1 603	3 541	554	766	57	108	165	25 382
Sep	9 359	4 011	5 644	1 623	3 574	554	771	64	101	164	25 600
Oct	9 391	4 050	5 645	1 642	3 565	570	809	70	106	176	25 743
Nov	9 475	4 039	5 691	1 661	3 608	536	830	69	109	178	25 909
Dec	9 380	3 997	5 631	1 638	3 567	526	834	57	111	168	25 630
<b>2007</b>											
Jan	9 430	3 997	5 624	1 658	3 566	513	824	63	126	188	25 674
Feb	9 530	4 057	5 638	1 719	3 599	514	834	66	109	175	25 956
Mar	9 622	4 086	5 691	1 761	3 666	522	864	61	104	164	26 273
Apr	9 674	4 097	5 694	1 759	3 697	524	890	61	98	158	26 395
May	9 612	4 121	5 696	1 772	3 760	528	901	66	91	157	26 456
Jun	9 585	4 178	5 663	1 778	3 821	540	902	80	92	173	26 547

- (a) Includes ACT prisoners held in NSW prisons. The ACT in NSW figures are a subset of the NSW figures and are not separately counted in the Australian totals – see Explanatory Notes, paragraph 19.
- (b) As of 1 July 2005, the definition of an adult changed in Vic. to a person aged 18 years and over – see Explanatory Notes, paragraph 33.
- (c) Refers to unsentenced persons in ACT prison custody and may include some sentenced fine default only prisoners – see Explanatory Notes, paragraph 19.
- (d) Prior to December quarter 2004, these figures are a single count taken on a specific day of the month and are not an average of the daily prisoner population for that month.
- (e) ACT in ACT figures and ACT in NSW figures may not add to ACT total due to rounding.

## IMPRISONMENT RATES (a)

	NSW(b)	Vic. (c)	Qld	SA	WA	Tas.	NT	ACT(d)	Aust. (c)
RATE PER 100,000 ADULT POPULATION									
<b>2004</b>	166.8	93.1	179.2	124.4	212.6	133.3	520.0	75.5	152.7
<b>2005</b>	172.7	93.0	177.3	127.4	227.5	143.3	556.8	74.4	156.8
<b>2006</b>	175.6	98.0	180.1	132.0	227.5	139.7	552.3	72.0	160.0
<b>2006</b>									
Jun Qtr	175.1	95.4	180.9	130.6	225.4	135.3	555.1	74.3	158.9
Sep Qtr	175.7	101.4	180.3	132.3	228.2	147.0	527.7	66.2	160.9
Dec Qtr	177.5	102.6	181.2	136.2	229.6	146.4	561.6	68.8	162.7
<b>2007</b>									
Mar Qtr	179.1	102.6	180.1	141.2	230.3	138.5	569.6	69.5	163.4
Jun Qtr	181.8	103.8	178.9	144.4	238.1	141.7	593.8	62.5	165.5
<b>2006</b>									
Apr	175.9	93.8	179.5	130.0	225.2	132.7	574.0	77.1	158.6
May	174.9	94.2	181.5	130.5	223.8	135.5	550.3	75.8	158.5
Jun	174.4	98.1	181.7	131.3	227.2	137.7	541.1	69.9	159.6
Jul	174.4	100.3	179.4	129.7	226.3	142.7	531.4	68.2	159.6
Aug	175.8	101.5	179.8	132.8	228.1	149.2	524.1	65.3	160.8
Sep	177.0	102.4	181.7	134.5	230.3	149.3	527.6	65.1	162.2
Oct	177.1	103.1	180.8	135.8	228.7	153.3	551.4	69.7	162.6
Nov	178.7	102.8	182.3	137.4	231.4	144.2	565.6	70.4	163.7
Dec	176.8	101.8	180.4	135.4	228.8	141.5	568.1	66.3	161.9
<b>2007</b>									
Jan	177.0	101.3	179.2	136.7	227.4	137.6	558.0	74.3	161.5
Feb	179.2	102.9	179.7	141.8	229.5	137.8	564.8	69.2	163.3
Mar	181.1	103.6	181.3	145.2	233.8	140.0	585.5	64.8	165.3
Apr	182.7	103.0	179.2	143.5	234.1	140.0	588.4	60.9	165.1
May	181.6	103.6	179.3	144.6	238.2	140.9	596.2	60.3	165.5
Jun	181.1	105.0	178.2	145.1	242.0	144.3	596.7	66.5	166.0

- (a) Imprisonment rates for the June quarter 2007 have been calculated using preliminary ERP rebased on the 2006 Census of Population and Housing - see Explanatory Notes, paragraph 25 and 26.
- (b) Excludes ACT prisoners held in NSW prisons.
- (c) As of 1 July 2005, the definition of an adult changed in Vic. to a person aged 18 years and over – see Explanatory Notes, paragraph 33.
- (d) Includes ACT prisoners held in ACT as well as ACT prisoners held in NSW – see Explanatory Notes, paragraph 21.

## PERSONS IN FULL-TIME CUSTODY, By sex

	NSW(a)	Vic.(b)	Qld	SA	WA	Tas.	NT	ACT in ACT(c)	ACT in NSW(a)(d)	ACT Total(e)	Aust.(a)(b)
<b>MALES (AVERAGE DAILY NUMBER)</b>											
<b>2004</b>	8 044	3 346	4 934	1 384	2 905	452	708	64	113	176	21 839
<b>2005</b>	8 396	3 358	4 988	1 425	3 190	495	766	63	113	176	22 679
<b>2006</b>	8 601	3 588	5 168	1 488	3 257	478	771	60	108	169	23 412
<b>2006</b>											
Jun Qtr	8 570	3 475	5 173	1 470	3 221	461	770	63	109	172	23 203
Sep Qtr	8 605	3 721	5 188	1 493	3 282	506	737	52	102	154	23 585
Dec Qtr	8 719	3 788	5 229	1 543	3 296	501	795	60	103	163	23 930
<b>2007</b>											
Mar Qtr	8 833	3 802	5 226	1 600	3 312	482	803	58	108	167	24 117
Jun Qtr	8 910	3 879	5 245	1 652	3 437	499	857	64	91	154	24 544
Apr	8 934	3 849	5 242	1 644	3 369	494	845	57	93	150	24 433
May	8 907	3 869	5 260	1 653	3 441	496	862	60	88	148	24 548
Jun	8 888	3 920	5 234	1 659	3 502	509	865	74	90	165	24 651
<b>FEMALES (AVERAGE DAILY NUMBER)</b>											
<b>2004</b>	610	249	349	88	255	31	18	4	5	10	1 605
<b>2005</b>	647	253	364	95	255	31	26	3	6	9	1 674
<b>2006</b>	679	237	401	102	260	40	32	6	7	12	1 757
<b>2006</b>											
Jun Qtr	670	235	395	100	251	39	33	6	8	14	1 730
Sep Qtr	694	249	413	104	260	40	34	8	5	13	1 802
Dec Qtr	696	241	426	104	283	43	30	6	5	11	1 829
<b>2007</b>											
Mar Qtr	694	244	426	112	298	34	38	5	5	10	1 851
Jun Qtr	714	252	439	118	322	31	41	5	3	8	1 922
Apr	740	248	452	115	328	31	45	4	4	8	1 961
May	706	252	436	119	319	32	39	6	3	9	1 909
Jun	697	258	429	119	319	32	38	6	2	8	1 897
<b>PERSONS (AVERAGE DAILY NUMBER)</b>											
<b>2004</b>	8 654	3 595	5 283	1 473	3 161	483	727	68	118	186	23 444
<b>2005</b>	9 043	3 610	5 351	1 521	3 445	526	791	66	119	185	24 353
<b>2006</b>	9 281	3 825	5 569	1 590	3 517	518	803	66	115	181	25 169
<b>2006</b>											
Jun Qtr	9 241	3 710	5 568	1 569	3 472	501	804	69	118	186	24 933
Sep Qtr	9 300	3 970	5 601	1 597	3 542	546	771	60	107	167	25 387
Dec Qtr	9 415	4 029	5 655	1 647	3 579	544	825	65	109	174	25 759
<b>2007</b>											
Mar Qtr	9 527	4 046	5 651	1 712	3 610	516	841	63	113	176	25 968
Jun Qtr	9 623	4 132	5 684	1 770	3 759	531	898	69	94	163	26 466
Apr	9 674	4 097	5 694	1 759	3 697	524	890	61	98	158	26 395
May	9 612	4 121	5 696	1 772	3 760	528	901	66	91	157	26 456
Jun	9 585	4 178	5 663	1 778	3 821	540	902	80	92	173	26 547

(a) Includes ACT prisoners held in NSW prisons. The ACT in NSW figures are a subset of the NSW figures and are not separately counted in the Australian totals – see Explanatory Notes, paragraph 19.

(b) As of 1 July 2005, the definition of an adult changed in Vic. to a person aged 18 years and over – see Explanatory Notes, paragraph 33.

(c) Refers to unsentenced persons in ACT prison custody and may include some sentenced fine default only prisoners – see Explanatory Notes, paragraph 19.

(d) Prior to the December quarter 2004, the figures are a single count taken on a specific day of the month and are not an average of the daily prisoner population for that month.

(e) ACT in ACT figures and ACT in NSW figures may not add to ACT total due to rounding.

## IMPRISONMENT RATES, By sex(a)

	NSW(b)	Vic. (c)	Qld	SA	WA	Tas.	NT	ACT(d)	Aust. (c)
MALES (RATE PER 100,000 ADULT POPULATION)									
<b>2004</b>	315.1	177.6	338.4	238.6	393.5	256.3	957.5	146.3	289.3
<b>2005</b>	325.6	177.2	333.5	243.4	423.5	276.6	1 017.4	144.3	296.5
<b>2006</b>	330.4	188.3	336.7	251.7	422.8	264.9	996.7	136.5	301.9
<b>2006</b>									
Jun Qtr	329.8	183.0	338.7	249.2	419.7	255.9	1 001.3	139.9	300.2
Sep Qtr	329.9	194.5	336.1	252.0	424.2	279.7	946.3	124.1	303.0
Dec Qtr	333.6	197.4	337.1	259.8	424.0	276.4	1 015.1	131.3	306.5
<b>2007</b>									
Mar Qtr	336.8	197.3	335.1	268.8	423.3	265.5	1 018.3	133.6	307.6
Jun Qtr	343.2	199.2	333.4	275.8	434.0	274.2	1 087.8	120.9	311.9
Apr	344.1	197.7	333.2	274.5	425.4	271.0	1 071.9	117.7	310.5
May	343.2	198.7	334.3	276.0	434.5	272.3	1 094.0	116.1	311.9
Jun	342.4	201.3	332.7	277.0	442.1	279.3	1 097.2	128.9	313.2
FEMALES (RATE PER 100,000 ADULT POPULATION)									
<b>2004</b>	23.3	12.6	23.4	14.6	34.1	16.6	28.0	7.7	20.6
<b>2005</b>	24.4	12.7	23.9	15.7	33.5	16.7	38.3	7.1	21.2
<b>2006</b>	25.4	11.8	25.8	16.7	33.6	20.8	46.9	9.7	22.0
<b>2006</b>									
Jun Qtr	25.0	11.8	25.5	16.3	32.5	20.7	48.9	11.2	21.7
Sep Qtr	26.0	12.5	26.4	16.9	33.4	20.9	49.9	10.3	22.5
Dec Qtr	26.0	12.0	27.2	16.9	36.2	22.7	43.2	8.4	22.8
<b>2007</b>									
Mar Qtr	25.9	12.1	27.0	18.2	38.0	17.7	55.2	7.4	23.0
Jun Qtr	26.6	12.4	27.4	18.8	40.9	16.3	56.1	6.2	23.7
Apr	27.5	12.2	28.2	18.4	41.6	15.9	62.2	6.1	24.2
May	26.3	12.4	27.2	19.0	40.6	16.6	54.2	6.5	23.5
Jun	26.0	12.7	26.7	19.0	40.5	16.5	52.0	6.1	23.4
PERSONS (RATE PER 100,000 ADULT POPULATION)									
<b>2004</b>	166.8	93.1	179.2	124.4	212.6	133.3	520.0	75.5	152.7
<b>2005</b>	172.7	93.0	177.3	127.4	227.5	143.3	556.8	74.4	156.8
<b>2006</b>	175.6	98.0	180.1	132.0	227.5	139.7	552.3	72.0	160.0
<b>2006</b>									
Jun Qtr	175.1	95.4	180.9	130.6	225.4	135.3	555.1	74.3	158.9
Sep Qtr	175.7	101.4	180.3	132.3	228.2	147.0	527.7	66.2	160.9
Dec Qtr	177.5	102.6	181.2	136.2	229.6	146.4	561.6	68.8	162.7
<b>2007</b>									
Mar Qtr	179.1	102.6	180.1	141.2	230.3	138.5	569.6	69.5	163.4
Jun Qtr	181.8	103.8	178.9	144.4	238.1	141.7	593.8	62.5	165.5
Apr	182.7	103.0	179.2	143.5	234.1	140.0	588.4	60.9	165.1
May	181.6	103.6	179.3	144.6	238.2	140.9	596.2	60.3	165.5
Jun	181.1	105.0	178.2	145.1	242.0	144.3	596.7	66.5	166.0

(a) Imprisonment rates for the June quarter 2007 have been calculated using preliminary ERP rebased on the 2006 Census of Population and Housing - see Explanatory Notes, paragraphs 25 and 26.

(b) Excludes ACT prisoners held in NSW prisons.

(c) As of 1 July 2005, the definition of an adult changed in Vic. to a person aged 18 years and over - see Explanatory Notes, paragraph 33.

(d) Includes ACT prisoners held in ACT as well as ACT prisoners held in NSW - see Explanatory Notes, paragraph 21.

## INDIGENOUS PERSONS IN FULL-TIME CUSTODY, By sex

	NSW(a)	Vic.(b)	Qld	SA	WA	Tas.	NT	ACT in ACT(c)	ACT in NSW(a)(d)	ACT Total(e)	Aust.(a)(b)
MALES (AVERAGE DAILY NUMBER)											
<b>2004</b>	1 490	167	1 156	240	1 083	na	558	8	8	17	na
<b>2005</b>	1 578	177	1 236	259	1 257	61	609	8	4	12	5 185
<b>2006</b>	1 716	202	1 379	281	1 274	53	637	8	9	17	5 548
<b>2006</b>											
Jun Qtr	1 724	198	1 386	279	1 263	50	638	8	8	16	5 546
Sep Qtr	1 727	207	1 376	282	1 279	58	613	6	10	17	5 549
Dec Qtr	1 721	209	1 391	295	1 314	54	653	7	15	22	5 644
<b>2007</b>											
Mar Qtr	1 768	207	1 409	318	1 348	57	657	7	15	22	5 771
Jun Qtr	1 775	209	1 397	347	1 416	54	705	10	9	19	5 913
Apr	1 769	202	1 414	339	1 380	57	695	11	10	21	5 867
May	1 774	208	1 402	348	1 419	53	709	10	8	18	5 923
Jun	1 781	218	1 375	354	1 447	53	712	9	8	18	5 950
FEMALES (AVERAGE DAILY NUMBER)											
<b>2004</b>	175	14	90	16	124	na	10	—	—	—	na
<b>2005</b>	182	17	98	24	131	6	20	—	—	—	479
<b>2006</b>	194	13	114	24	134	8	23	1	—	1	512
<b>2006</b>											
Jun Qtr	194	14	119	24	133	6	24	1	—	1	515
Sep Qtr	205	14	113	24	131	8	23	1	—	1	517
Dec Qtr	200	13	122	24	150	11	21	—	1	1	541
<b>2007</b>											
Mar Qtr	194	15	123	29	163	7	30	—	—	—	562
Jun Qtr	209	17	129	29	183	7	33	1	—	1	608
Apr	213	17	138	30	189	6	35	1	—	1	628
May	205	15	130	29	181	7	32	1	—	1	600
Jun	210	18	121	28	179	8	32	1	—	1	596
PERSONS (AVERAGE DAILY NUMBER)											
<b>2004</b>	1 665	181	1 246	256	1 207	na	569	8	8	17	na
<b>2005</b>	1 761	194	1 334	284	1 388	67	629	8	4	12	5 664
<b>2006</b>	1 910	215	1 492	305	1 408	61	660	9	9	18	6 060
<b>2006</b>											
Jun Qtr	1 918	212	1 505	303	1 396	56	662	9	8	17	6 061
Sep Qtr	1 932	221	1 489	306	1 410	66	637	7	10	17	6 067
Dec Qtr	1 921	221	1 514	319	1 464	66	674	7	16	23	6 185
<b>2007</b>											
Mar Qtr	1 961	222	1 532	347	1 511	65	688	8	15	22	6 333
Jun Qtr	1 984	226	1 526	376	1 599	61	738	11	9	20	6 521
Apr	1 982	219	1 551	369	1 569	63	729	12	10	22	6 495
May	1 980	223	1 532	377	1 601	60	741	10	8	19	6 523
Jun	1 991	236	1 496	382	1 626	61	744	10	8	18	6 546

— nil or rounded to zero (including null cells)

na not available

(a) Includes ACT prisoners held in NSW prisons. The ACT in NSW figures are a subset of the NSW figures and are not separately counted in the Australian totals – see Explanatory Notes, paragraph 19.

(b) As of 1 July 2005, the definition of an adult changed in Vic. to a person aged 18 years and over – see Explanatory Notes, paragraph 33.

(c) Refers to unsentenced persons in ACT prison custody and may include some sentenced fine default only prisoners – see Explanatory Notes, paragraph 19.

(d) Prior to the December quarter 2004, the figures are a single count taken on a specific day of the month and are not an average of the daily prisoner population for that month.

(e) ACT in ACT figures and ACT in NSW figures may not add to ACT total due to rounding.

## INDIGENOUS IMPRISONMENT RATES, By sex(a)

	NSW(b)	Vic. (c)	Qld	SA	WA	Tas.	NT	ACT(d)	Aust. (c)
MALES (RATE PER 100,000 ADULT INDIGENOUS POPULATION)									
<b>2004</b>	3 929.0	1 952.2	3 204.3	3 244.6	5 736.5	na	3 271.4	1 411.3	na
<b>2005</b>	4 074.1	2 033.0	3 331.5	3 408.0	6 478.5	1 232.2	3 490.8	1 000.8	3 839.3
<b>2006</b>	4 318.0	2 288.5	3 604.8	3 591.2	6 382.1	1 038.6	3 577.3	1 366.7	4 006.0
<b>2006</b>									
Jun Qtr	4 340.1	2 242.8	3 624.5	3 574.7	6 329.8	982.0	3 581.2	1 306.2	4 004.3
Sep Qtr	4 344.7	2 347.7	3 597.2	3 607.7	6 409.0	1 144.9	3 444.0	1 329.4	4 006.6
Dec Qtr	4 314.8	2 366.5	3 637.9	3 775.0	6 587.0	1 068.6	3 665.7	1 773.3	4 075.2
<b>2007</b>									
Mar Qtr	4 327.9	2 271.4	3 573.9	3 968.5	6 573.7	1 101.9	3 616.8	1 719.2	4 058.3
Jun Qtr	4 359.1	2 300.0	3 543.1	4 333.3	6 905.8	1 043.1	3 881.2	1 486.3	4 158.5
Apr	4 341.3	2 219.9	3 585.6	4 233.3	6 734.4	1 092.4	3 821.6	1 665.1	4 125.5
May	4 359.5	2 285.1	3 555.3	4 345.7	6 924.0	1 013.8	3 900.8	1 421.2	4 165.2
Jun	4 376.5	2 395.3	3 487.9	4 420.6	7 058.4	1 024.0	3 920.5	1 374.9	4 184.5
FEMALES (RATE PER 100,000 ADULT INDIGENOUS POPULATION)									
<b>2004</b>	439.2	155.8	224.4	198.6	612.9	na	57.9	6.8	na
<b>2005</b>	447.4	190.0	239.5	299.3	631.7	115.1	107.2	14.1	332.0
<b>2006</b>	463.9	145.0	270.8	291.3	628.1	149.4	124.9	78.3	346.2
<b>2006</b>									
Jun Qtr	464.9	152.7	282.6	285.5	620.7	111.1	128.4	88.9	348.1
Sep Qtr	488.3	152.1	269.2	285.2	610.4	142.3	125.1	68.4	349.8
Dec Qtr	476.5	139.9	291.0	281.4	699.6	211.5	113.7	84.6	365.8
<b>2007</b>									
Mar Qtr	451.5	158.4	285.9	335.5	741.9	136.6	159.5	21.4	370.4
Jun Qtr	488.1	176.9	300.2	335.1	831.3	132.0	172.3	57.3	400.6
Apr	496.6	176.2	319.3	346.7	857.9	115.7	182.2	81.9	413.8
May	478.3	163.6	300.9	335.1	823.4	138.4	166.8	49.8	395.6
Jun	489.8	191.4	280.2	323.5	812.8	141.7	168.0	40.6	392.7
PERSONS (RATE PER 100,000 ADULT INDIGENOUS POPULATION)									
<b>2004</b>	2 137.1	1 038.4	1 638.8	1 670.9	3 088.8	na	1 625.3	702.3	na
<b>2005</b>	2 211.8	1 097.2	1 710.0	1 798.4	3 452.9	662.6	1 760.5	502.4	2 027.7
<b>2006</b>	2 336.5	1 202.2	1 860.2	1 881.1	3 404.6	586.0	1 810.6	715.1	2 116.2
<b>2006</b>									
Jun Qtr	2 347.8	1 183.6	1 875.7	1 870.2	3 375.6	538.7	1 814.3	690.6	2 116.3
Sep Qtr	2 362.1	1 235.0	1 855.7	1 885.9	3 408.4	634.6	1 745.7	691.7	2 118.3
Dec Qtr	2 341.4	1 237.9	1 886.5	1 964.6	3 540.5	632.4	1 848.1	919.3	2 159.7
<b>2007</b>									
Mar Qtr	2 334.2	1 199.8	1 856.4	2 081.6	3 554.2	611.1	1 849.3	860.1	2 154.5
Jun Qtr	2 368.2	1 223.3	1 849.2	2 256.7	3 760.6	579.8	1 985.0	763.3	2 218.5
Apr	2 363.9	1 183.5	1 879.5	2 214.6	3 691.7	595.8	1 960.9	864.0	2 209.4
May	2 363.3	1 209.2	1 855.4	2 262.6	3 765.3	568.7	1 991.8	727.2	2 219.2
Jun	2 377.5	1 277.7	1 812.4	2 292.6	3 824.6	575.4	2 002.0	699.7	2 227.0

na not available

(a) The rates calculation uses the Indigenous population projection for 30 June of that calendar year as the denominator – see Explanatory Notes, paragraphs 27-29.

(b) Excludes ACT prisoners held in NSW prisons.

(c) As of 1 July 2005, the definition of an adult changed in Vic. to a person aged 18 years and over – see Explanatory Notes, paragraph 33.

(d) Includes ACT prisoners held in ACT as well as ACT prisoners held in NSW – see Explanatory Notes, paragraph 21.

## PERSONS IN FULL-TIME CUSTODY, By type of custody

	NSW(a)(b)	Vic.(c)(d)	Qld	SA	WA	Tas.	NT	ACT in ACT(e)	ACT in NSW(a)(f)	ACT Total(g)	Aust.(h)
PERSONS IN SECURE CUSTODY (AVERAGE DAILY NUMBER)											
<b>2004</b>	4 616	3 240	4 407	1 308	2 204	394	571	68	24	92	16 807
<b>2005</b>	5 207	3 225	4 500	1 348	2 489	442	622	66	29	95	17 901
<b>2006</b>	5 736	3 443	4 766	1 413	2 608	444	616	66	33	99	19 093
<b>2006</b>											
Jun Qtr	5 663	3 309	4 761	1 391	2 597	428	628	69	36	104	18 846
Sep Qtr	5 753	3 608	4 791	1 415	2 609	467	580	60	28	88	19 283
Dec Qtr	5 880	3 662	4 857	1 459	2 645	479	612	65	33	98	19 659
<b>2007</b>											
Mar Qtr	5 931	3 671	4 882	1 520	2 709	458	614	63	34	97	19 850
Jun Qtr	5 918	3 733	4 918	1 577	2 786	470	643	69	23	92	20 114
Apr	5 980	3 705	4 905	1 565	2 742	467	638	61	25	86	20 063
May	5 930	3 723	4 930	1 579	2 787	464	645	66	21	86	20 123
Jun	5 845	3 772	4 919	1 586	2 829	480	645	80	22	102	20 156
PERSONS IN OPEN CUSTODY (AVERAGE DAILY NUMBER)											
<b>2004</b>	4 038	356	876	165	957	89	155	..	94	94	6 637
<b>2005</b>	3 835	385	851	172	956	84	169	..	89	89	6 452
<b>2006</b>	3 545	381	803	177	909	74	187	..	82	82	6 076
<b>2006</b>											
Jun Qtr	3 577	401	806	178	875	73	176	..	82	82	6 087
Sep Qtr	3 546	363	810	182	933	79	192	..	79	79	6 104
Dec Qtr	3 535	367	798	188	934	65	213	..	76	76	6 100
<b>2007</b>											
Mar Qtr	3 596	375	769	192	901	58	227	..	79	79	6 118
Jun Qtr	3 705	399	766	193	973	61	255	..	71	71	6 352
Apr	3 694	392	789	194	955	57	251	..	72	72	6 332
May	3 683	398	766	193	973	64	256	..	70	70	6 333
Jun	3 739	406	744	192	992	61	257	..	71	71	6 391
PERSONS IN CUSTODY (AVERAGE DAILY NUMBER)											
<b>2004</b>	8 654	3 595	5 283	1 473	3 161	483	727	68	118	186	23 444
<b>2005</b>	9 043	3 610	5 351	1 521	3 445	526	791	66	119	185	24 353
<b>2006</b>	9 281	3 825	5 569	1 590	3 517	518	803	66	115	181	25 169
<b>2006</b>											
Jun Qtr	9 241	3 710	5 568	1 569	3 472	501	804	69	118	186	24 933
Sep Qtr	9 300	3 970	5 601	1 597	3 542	546	771	60	107	167	25 387
Dec Qtr	9 415	4 029	5 655	1 647	3 579	544	825	65	109	174	25 759
<b>2007</b>											
Mar Qtr	9 527	4 046	5 651	1 712	3 610	516	841	63	113	176	25 968
Jun Qtr	9 623	4 132	5 684	1 770	3 759	531	898	69	94	163	26 466
Apr	9 674	4 097	5 694	1 759	3 697	524	890	61	98	158	26 395
May	9 612	4 121	5 696	1 772	3 760	528	901	66	91	157	26 456
Jun	9 585	4 178	5 663	1 778	3 821	540	902	80	92	173	26 547

.. not applicable

(a) Includes ACT prisoners held in NSW prisons. The ACT in NSW figures are a subset of the NSW figures and are not separately counted in the Australian totals – see Explanatory Notes, paragraph 19.

(b) The classification of some NSW correctional facilities changed from July 2005 - see Explanatory Notes, paragraph 30.

(c) Type of custody counts in Victoria have been affected by the closure of Beechworth Prison in December 2004, and the opening of Beechworth Correctional Centre in February 2005 - see Explanatory Notes, paragraph 32.

(d) As of 1 July 2005, the definition of an adult changed in Vic. to a person aged 18 years and over – see Explanatory Notes, paragraph 33.

(e) Refers to unsentenced persons in ACT prison custody and may include some sentenced fine default only prisoners – see Explanatory Notes, paragraph 19.

(f) Prior to December quarter 2004, the figures are a single count taken on a specific day of the month and are not an average of the daily prisoner population for that month.

(g) ACT in ACT figures and ACT in NSW figures may not add to ACT total due to rounding.

(h) See footnotes a, b and d.



## IMPRISONMENT RATES, By type of custody(a)

	NSW(b)(c)	Vic.(d)(e)	Qld	SA	WA	Tas.	NT	ACT(f)	Aust.(e)
PERSONS IN SECURE CUSTODY (RATE PER 100,000 ADULT POPULATION)									
<b>2004</b>	89.7	83.9	149.5	110.4	148.2	108.7	408.7	37.2	109.5
<b>2005</b>	100.2	83.1	149.1	113.0	164.4	120.5	437.7	38.4	115.3
<b>2006</b>	109.3	88.2	154.1	117.3	168.7	119.9	423.8	39.5	121.4
<b>2006</b>									
Jun Qtr	108.0	85.0	154.7	115.7	168.6	115.6	433.5	41.6	120.1
Sep Qtr	109.4	92.1	154.2	117.2	168.1	125.7	396.6	34.9	122.2
Dec Qtr	111.5	93.2	155.6	120.7	169.7	128.8	416.9	38.9	124.2
<b>2007</b>									
Mar Qtr	112.2	93.1	155.6	125.4	172.8	122.9	416.1	38.3	124.9
Jun Qtr	112.5	93.8	154.8	128.7	176.5	125.5	425.1	35.2	125.8
Apr	113.6	93.1	154.4	127.7	173.7	124.8	422.1	33.1	125.5
May	112.7	93.6	155.2	128.8	176.5	123.8	426.7	33.2	125.9
Jun	111.1	94.8	154.8	129.4	179.2	128.1	426.5	39.3	126.1
PERSONS IN OPEN CUSTODY (RATE PER 100,000 ADULT POPULATION)									
<b>2004</b>	77.1	9.2	29.7	13.9	64.4	24.6	111.2	38.4	43.2
<b>2005</b>	72.5	9.9	28.2	14.4	63.1	22.8	119.1	36.0	41.5
<b>2006</b>	66.3	9.8	26.0	14.7	58.8	19.9	128.5	32.5	38.6
<b>2006</b>									
Jun Qtr	67.1	10.3	26.2	14.8	56.8	19.6	121.6	32.7	38.8
Sep Qtr	66.3	9.3	26.1	15.1	60.1	21.3	131.1	31.3	38.7
Dec Qtr	66.0	9.3	25.6	15.5	59.9	17.6	144.8	29.9	38.5
<b>2007</b>									
Mar Qtr	66.9	9.5	24.5	15.8	57.5	15.6	153.5	31.2	38.5
Jun Qtr	69.3	10.0	24.1	15.7	61.6	16.2	168.7	27.3	39.7
Apr	69.1	9.9	24.8	15.8	60.5	15.1	166.3	27.8	39.6
May	68.9	10.0	24.1	15.7	61.7	17.1	169.4	27.1	39.6
Jun	70.0	10.2	23.4	15.7	62.8	16.2	170.2	27.1	40.0
PERSONS IN CUSTODY (RATE PER 100,000 ADULT POPULATION)									
<b>2004</b>	166.8	93.1	179.2	124.4	212.6	133.3	520.0	75.5	152.7
<b>2005</b>	172.7	93.0	177.3	127.4	227.5	143.3	556.8	74.4	156.8
<b>2006</b>	175.6	98.0	180.1	132.0	227.5	139.7	552.3	72.0	160.0
<b>2006</b>									
Jun Qtr	175.1	95.4	180.9	130.6	225.4	135.3	555.1	74.3	158.9
Sep Qtr	175.7	101.4	180.3	132.3	228.2	147.0	527.7	66.2	160.9
Dec Qtr	177.5	102.6	181.2	136.2	229.6	146.4	561.6	68.8	162.7
<b>2007</b>									
Mar Qtr	179.1	102.6	180.1	141.2	230.3	138.5	569.6	69.5	163.4
Jun Qtr	181.8	103.8	178.9	144.4	238.1	141.7	593.8	62.5	165.5
Apr	182.7	103.0	179.2	143.5	234.1	140.0	588.4	60.9	165.1
May	181.6	103.6	179.3	144.6	238.2	140.9	596.2	60.3	165.5
Jun	181.1	105.0	178.2	145.1	242.0	144.3	596.7	66.5	166.0

(a) Imprisonment rates for the June quarter 2007 have been calculated using preliminary ERP rebased on the 2006 Census of Population and Housing - see Explanatory Notes, paragraphs 25 and 26.

(b) Excludes ACT prisoners held in NSW prisons.

(c) The classification of some NSW correctional facilities changed from July 2005 - see Explanatory Notes, paragraph 30.

(d) Type of custody counts in Victoria have been affected by the closure of Beechworth Prison in December 2004, and the opening of Beechworth Correctional Centre in February 2005 - see Explanatory Notes, paragraph 32.

(e) As of 1 July 2005, the definition of an adult changed in Vic. to a person aged 18 years and over - see Explanatory Notes, paragraph 33.

(f) Includes ACT prisoners held in ACT as well as ACT prisoners held in NSW - see Explanatory Notes, paragraph 21.

## PERSONS IN FULL-TIME CUSTODY, By legal status(a)

	NSW(b)	Vic. (c)	Qld	SA	WA	Tas.	NT	ACT in ACT(d)	ACT in NSW(b)	ACT Total(e)	Aust.(b)(c)
UNSENTENCED (NUMBER ON FIRST DAY OF MONTH)											
<b>2004</b>	1 985	661	1 099	479	498	96	136	63	—	63	5 016
<b>2005</b>	2 096	651	1 078	521	553	119	144	67	—	67	5 229
<b>2006</b>	2 221	700	1 176	548	603	120	164	65	—	65	5 597
<b>2006</b>											
Jun Qtr	2 200	644	1 166	562	598	121	153	72	—	72	5 516
Sep Qtr	2 234	735	1 200	551	600	139	168	60	—	60	5 686
Dec Qtr	2 291	767	1 221	553	632	121	182	64	—	64	5 833
<b>2007</b>											
Mar Qtr	2 371	747	1 241	599	670	111	168	64	—	64	5 971
Jun Qtr	2 382	781	1 294	635	681	122	188	64	—	64	6 147
SENTENCED (NUMBER ON FIRST DAY OF MONTH)											
<b>2004</b>	6 645	2 941	4 184	1 006	2 636	387	592	1	119	120	18 393
<b>2005</b>	6 933	2 963	4 255	1 016	2 890	409	647	1	120	121	19 112
<b>2006</b>	7 049	3 105	4 367	1 048	2 906	398	637	1	115	116	19 509
<b>2006</b>											
Jun Qtr	7 059	3 027	4 363	1 014	2 882	380	663	—	118	118	19 389
Sep Qtr	7 054	3 205	4 380	1 054	2 934	404	605	—	105	105	19 637
Dec Qtr	7 137	3 284	4 418	1 109	2 958	433	627	2	113	114	19 967
<b>2007</b>											
Mar Qtr	7 127	3 271	4 374	1 100	2 901	394	663	—	109	109	19 830
Jun Qtr	7 247	3 336	4 391	1 147	3 036	407	714	1	96	97	20 280
TOTAL (NUMBER ON FIRST DAY OF MONTH)											
<b>2004</b>	8 631	3 602	5 284	1 485	3 134	483	728	64	119	182	23 409
<b>2005</b>	9 029	3 614	5 333	1 537	3 442	528	791	68	120	188	24 341
<b>2006</b>	9 269	3 805	5 543	1 595	3 509	518	801	65	115	180	25 106
<b>2006</b>											
Jun Qtr	9 259	3 671	5 528	1 577	3 480	501	816	72	118	190	24 905
Sep Qtr	9 288	3 940	5 580	1 605	3 534	543	774	60	105	165	25 322
Dec Qtr	9 428	4 051	5 639	1 662	3 590	554	809	66	113	179	25 800
<b>2007</b>											
Mar Qtr	9 498	4 018	5 615	1 699	3 571	505	831	64	109	173	25 801
Jun Qtr	9 629	4 117	5 685	1 782	3 717	530	902	65	96	161	26 426
Apr	9 670	4 086	5 682	1 742	3 674	523	890	56	96	152	26 323
May	9 620	4 117	5 673	1 798	3 678	528	901	67	93	160	26 382
Jun	9 597	4 149	5 699	1 806	3 798	538	915	72	98	170	26 574

— nil or rounded to zero (including null cells)

- (a) Figures for the quarter and year for first day of month counts are calculated as a simple average – see Explanatory Notes, paragraph 5.
- (b) Includes ACT prisoners held in NSW prisons. The ACT in NSW figures are a subset of the NSW figures and are not separately counted in the Australian totals – see Explanatory Notes, paragraph 19.

- (c) As of 1 July 2005, the definition of an adult changed in Vic. to a person aged 18 years and over – see Explanatory Notes, paragraph 33.
- (d) Refers to unsentenced persons in ACT prison custody and may include some sentenced fine default only prisoners – see Explanatory Notes, paragraph 19.
- (e) ACT in ACT figures and ACT in NSW figures may not add to ACT total due to rounding.

## IMPRISONMENT RATES, By legal status(a)(b)

	NSW(c)	Vic. (b)	Qld	SA	WA	Tas.	NT	ACT(d)	Aust. (b)
UNSENTENCED (RATE PER 100,000 ADULT POPULATION)									
<b>2004</b>	38.8	17.1	37.3	40.4	33.5	26.3	97.2	25.5	32.7
<b>2005</b>	40.6	16.8	35.7	43.7	36.5	32.5	101.3	26.9	33.7
<b>2006</b>	42.5	17.9	38.0	45.5	39.0	32.4	112.8	25.7	35.6
<b>2006</b>									
Jun Qtr	42.2	16.5	37.9	46.8	38.8	32.7	105.5	28.6	35.2
Sep Qtr	42.7	18.8	38.6	45.6	38.7	37.3	115.2	23.7	36.0
Dec Qtr	43.7	19.5	39.1	45.8	40.6	32.6	124.0	25.4	36.8
<b>2007</b>									
Mar Qtr	45.1	18.9	39.6	49.4	42.7	29.7	114.0	25.1	37.6
Jun Qtr	45.4	19.6	40.7	51.8	43.1	32.7	124.6	24.6	38.4
SENTENCED (RATE PER 100,000 ADULT POPULATION)									
<b>2004</b>	127.6	76.1	141.9	85.0	177.3	106.8	423.3	48.6	119.8
<b>2005</b>	131.9	76.3	140.9	85.1	190.8	111.4	455.1	48.7	123.1
<b>2006</b>	132.8	79.5	141.2	87.0	188.0	107.5	438.0	45.9	124.0
<b>2006</b>									
Jun Qtr	133.2	77.8	141.7	84.4	187.1	102.8	458.2	47.0	123.6
Sep Qtr	132.8	81.9	141.0	87.3	189.0	108.8	414.3	41.8	124.4
Dec Qtr	134.0	83.6	141.5	91.7	189.7	116.5	427.1	45.2	126.1
<b>2007</b>									
Mar Qtr	133.5	82.9	139.4	90.7	185.0	105.8	448.8	43.1	124.8
Jun Qtr	136.4	83.9	138.2	93.6	192.3	108.8	472.0	37.2	126.8
TOTAL (RATE PER 100,000 ADULT POPULATION)									
<b>2004</b>	166.4	93.2	179.2	125.4	210.8	133.1	520.4	74.0	152.5
<b>2005</b>	172.4	93.1	176.7	128.8	227.3	143.9	556.4	75.6	156.7
<b>2006</b>	175.4	97.5	179.3	132.4	227.0	139.9	550.8	71.6	159.6
<b>2006</b>									
Jun Qtr	175.4	94.3	179.6	131.2	225.9	135.5	563.7	75.6	158.8
Sep Qtr	175.5	100.6	179.6	132.9	227.7	146.1	529.5	65.4	160.4
Dec Qtr	177.7	103.1	180.7	137.4	230.3	149.1	551.0	70.6	163.0
<b>2007</b>									
Mar Qtr	178.6	101.9	178.9	140.1	227.8	135.5	562.8	68.2	162.3
Jun Qtr	181.9	103.5	178.9	145.4	235.4	141.4	596.6	61.8	165.3
Apr	182.6	102.7	178.8	142.1	232.7	139.6	588.6	58.5	164.6
May	181.7	103.5	178.5	146.7	232.9	141.0	595.9	61.5	165.0
Jun	181.2	104.3	179.4	147.4	240.5	143.7	605.2	65.4	166.2

- (a) Imprisonment rates for the June quarter 2007 have been calculated using preliminary ERP rebased on the 2006 Census of Population and Housing - see Explanatory Notes, paragraphs 25 and 26.
- (b) As of 1 July 2005, the definition of an adult changed in Vic. to a person aged 18 years and over – see Explanatory Notes, paragraph 33.
- (c) Excludes ACT prisoners held in NSW prisons.
- (d) Includes ACT prisoners held in ACT as well as ACT prisoners held in NSW – see Explanatory Notes, paragraph 21.

## INDIGENOUS PERSONS IN FULL-TIME CUSTODY, By legal status(a)

	NSW(b)	Vic. (c)	Qld	SA	WA	Tas.	NT	ACT in ACT(d)	ACT in NSW(b)	ACT Total(e)	Aust. (b) (c)
UNSENTENCED (NUMBER ON FIRST DAY OF MONTH)											
<b>2004</b>	369	38	245	97	190	15	99	7	—	7	1 060
<b>2005</b>	392	44	249	118	210	18	105	8	—	8	1 144
<b>2006</b>	441	48	285	116	241	19	140	10	—	10	1 300
<b>2006</b>											
Jun Qtr	456	46	278	122	245	16	132	10	—	10	1 304
Sep Qtr	419	53	275	110	225	21	145	8	—	8	1 256
Dec Qtr	442	50	299	117	253	24	157	7	—	7	1 347
<b>2007</b>											
Mar Qtr	447	52	330	146	273	17	140	6	—	6	1 412
Jun Qtr	450	51	343	161	282	13	151	12	—	12	1 462
SENTENCED (NUMBER ON FIRST DAY OF MONTH)											
<b>2004</b>	1 290	144	1 002	161	1 005	49	471	—	9	9	4 122
<b>2005</b>	1 372	150	1 086	172	1 181	50	522	—	4	4	4 533
<b>2006</b>	1 473	166	1 206	193	1 162	42	518	—	10	10	4 761
<b>2006</b>											
Jun Qtr	1 470	165	1 217	184	1 153	40	544	—	9	9	4 773
Sep Qtr	1 513	167	1 230	203	1 181	42	494	—	10	10	4 830
Dec Qtr	1 511	174	1 218	209	1 206	45	505	—	18	18	4 868
<b>2007</b>											
Mar Qtr	1 509	170	1 190	192	1 219	49	541	—	13	13	4 870
Jun Qtr	1 526	170	1 190	213	1 296	50	587	—	9	9	5 032
TOTAL (NUMBER ON FIRST DAY OF MONTH)											
<b>2004</b>	1 659	182	1 248	258	1 194	64	570	7	9	16	5 182
<b>2005</b>	1 764	194	1 335	289	1 391	69	627	8	4	12	5 677
<b>2006</b>	1 913	214	1 492	309	1 404	61	659	10	10	19	6 061
<b>2006</b>											
Jun Qtr	1 925	211	1 495	306	1 398	57	676	11	9	20	6 078
Sep Qtr	1 932	220	1 505	313	1 407	63	639	8	10	19	6 086
Dec Qtr	1 952	224	1 517	326	1 459	68	662	7	18	25	6 215
<b>2007</b>											
Mar Qtr	1 956	222	1 520	338	1 492	66	682	6	13	19	6 282
Jun Qtr	1 977	221	1 533	374	1 578	63	738	12	9	21	6 495

— nil or rounded to zero (including null cells)

- (a) Figures for the quarter and year for first day of the month counts are calculated as a simple average – see Explanatory Notes, paragraph 5.
- (b) Includes ACT prisoners held in NSW prisons. The ACT in NSW figures are a subset of the NSW figures and are not separately counted in the Australian totals – see Explanatory Notes, paragraph 19.

- (c) As of 1 July 2005, the definition of an adult changed in Vic. to a person aged 18 years and over – see Explanatory Notes, paragraph 33.
- (d) Refers to unsentenced persons in ACT prison custody and may include some sentenced fine default only prisoners – see Explanatory Notes, paragraph 19.
- (e) ACT in ACT figures and ACT in NSW figures may not add to ACT total due to rounding.

## INDIGENOUS IMPRISONMENT RATES, By legal status(a)(b)

	NSW(c)	Vic. (d)	Qld	SA	WA	Tas.	NT	ACT(e)	Aust. (d)
UNSENTENCED (RATE PER 100,000 ADULT INDIGENOUS POPULATION)									
<b>2004</b>	475.6	216.4	322.7	634.2	485.2	153.5	284.2	305.3	389.0
<b>2005</b>	494.0	250.9	319.1	745.2	522.0	179.5	294.2	329.5	409.6
<b>2006</b>	541.4	267.6	355.5	714.2	583.6	184.2	384.3	376.8	453.8
<b>2006</b>									
Jun Qtr	560.1	255.5	346.1	754.3	591.6	157.7	361.0	409.9	455.4
Sep Qtr	514.6	294.7	342.8	680.3	544.9	202.7	396.7	330.6	438.6
Dec Qtr	542.9	277.9	372.3	721.4	611.8	228.4	429.6	277.7	470.5
<b>2007</b>									
Mar Qtr	536.3	283.3	399.4	878.2	641.4	160.5	377.4	232.5	480.2
Jun Qtr	539.9	274.3	415.5	964.3	663.4	119.6	405.2	477.9	497.5
SENTENCED (RATE PER 100,000 ADULT INDIGENOUS POPULATION)									
<b>2004</b>	1 653.3	826.5	1 318.7	1 050.4	2 570.6	491.7	1 345.3	371.9	1 512.0
<b>2005</b>	1 721.9	848.5	1 392.6	1 088.7	2 938.3	498.2	1 461.9	159.7	1 622.8
<b>2006</b>	1 798.8	929.3	1 503.6	1 191.0	2 810.5	403.8	1 421.4	380.1	1 662.5
<b>2006</b>									
Jun Qtr	1 795.4	923.2	1 516.9	1 134.5	2 788.1	389.3	1 491.6	370.2	1 666.8
Sep Qtr	1 847.4	934.4	1 532.7	1 249.6	2 856.6	405.4	1 355.4	409.9	1 686.7
Dec Qtr	1 835.1	973.6	1 518.5	1 290.7	2 915.5	431.1	1 384.7	700.8	1 699.7
<b>2007</b>									
Mar Qtr	1 793.2	920.4	1 441.6	1 150.3	2 868.4	462.7	1 455.9	516.6	1 656.9
Jun Qtr	1 819.5	920.4	1 441.2	1 280.4	3 048.8	472.2	1 578.7	335.8	1 712.0
TOTAL (RATE PER 100,000 ADULT INDIGENOUS POPULATION)									
<b>2004</b>	2 129.0	1 042.9	1 641.4	1 684.6	3 055.8	645.2	1 629.5	677.2	1 901.0
<b>2005</b>	2 215.9	1 099.4	1 711.7	1 833.9	3 460.3	677.8	1 756.1	489.2	2 032.4
<b>2006</b>	2 340.2	1 196.9	1 859.1	1 905.2	3 394.1	588.0	1 805.8	757.0	2 116.2
<b>2006</b>									
Jun Qtr	2 355.5	1 178.8	1 863.0	1 888.7	3 379.8	547.0	1 852.6	780.1	2 122.2
Sep Qtr	2 362.0	1 229.1	1 875.4	1 929.8	3 401.5	608.1	1 752.1	740.4	2 125.2
Dec Qtr	2 378.0	1 251.5	1 890.8	2 012.0	3 527.3	659.6	1 814.2	978.4	2 170.2
<b>2007</b>									
Mar Qtr	2 329.5	1 203.7	1 841.0	2 028.6	3 509.8	623.3	1 833.3	749.1	2 137.1
Jun Qtr	2 359.5	1 194.7	1 856.7	2 244.6	3 712.2	591.8	1 983.9	813.6	2 209.4

- (a) The rates calculation uses the Indigenous population projection for 30 June of that calendar year as the denominator – see Explanatory Notes, paragraphs 27-29.
- (b) Figures for the quarter and year for first day of the month counts are calculated as a simple average – see Explanatory Notes, paragraph 5.
- (c) Excludes ACT prisoners in NSW prisons.
- (d) As of 1 July 2005, the definition of an adult changed in Vic. to a person aged 18 years and over – see Explanatory Notes, paragraph 33.
- (e) Includes ACT prisoners held in ACT as well as ACT prisoners held in NSW – see Explanatory Notes, paragraph 21.

## SENTENCED PRISONER RECEPTIONS INTO FULL-TIME CUSTODY

	NSW(a)	Vic. (b)	Qld	SA	WA	Tas.	NT	ACT in ACT	ACT in NSW(a)	ACT Total	Aust. (a) (b)
NUMBER											
<b>2004</b>	6 956	3 916	5 307	1 178	3 810	809	1 123	43	123	166	23 142
<b>2005</b>	7 143	3 630	5 654	1 068	3 799	771	1 249	39	142	181	23 353
<b>2006</b>	8 056	3 863	6 045	1 210	3 331	836	1 350	53	128	181	24 744
<b>2006</b>											
Jun Qtr	1 895	1 019	1 540	299	835	232	309	9	33	42	6 138
Sep Qtr	2 115	966	1 522	346	822	243	319	3	29	32	6 336
Dec Qtr	2 169	969	1 548	316	791	179	345	22	47	69	6 339
<b>2007</b>											
Mar Qtr	2 126	957	1 637	308	850	176	341	8	19	27	6 403
Jun Qtr	2 183	990	1 702	352	875	195	392	12	27	39	6 701

(a) Includes ACT prisoners held in NSW prisons. The ACT in NSW figures are a subset of the NSW figures and are not separately counted in the Australian totals - see Explanatory Notes, paragraph 19.

(b) As of 1 July 2005, the definition of an adult changed in Vic. to a person aged 18 years and over – see Explanatory Notes, paragraph 33.

## PERSONS IN PERIODIC DETENTION, By sex(a)(b)

	NSW		ACT(c)	
	no. (d)	rate(e)	no. (d)	rate(e)
MALES				
<b>2004</b>	687	27.3	89	73.7
<b>2005</b>	762	30.0	76	62.6
<b>2006</b>	684	26.6	52	42.2
<b>2006</b>				
Jun Qtr	671	26.2	52	42.3
Sep Qtr	671	26.0	52	42.0
Dec Qtr	682	26.4	48	39.0
<b>2007</b>				
Mar Qtr	663	25.6	48	38.9
Jun Qtr	691	26.9	60	47.0
Apr	686	26.7	58	45.0
May	685	26.6	60	47.0
Jun	703	27.4	63	49.0
FEMALES				
<b>2004</b>	62	2.4	4	3.3
<b>2005</b>	73	2.8	6	4.7
<b>2006</b>	64	2.4	3	2.2
<b>2006</b>				
Jun Qtr	62	2.3	2	1.8
Sep Qtr	63	2.4	2	1.6
Dec Qtr	70	2.6	3	2.4
<b>2007</b>				
Mar Qtr	80	3.0	4	3.3
Jun Qtr	78	2.9	6	4.5
Apr	79	3.0	5	3.8
May	78	2.9	7	5.1
Jun	77	2.9	6	4.7
PERSONS				
<b>2004</b>	749	14.6	93	37.8
<b>2005</b>	835	16.2	82	33.1
<b>2006</b>	748	14.3	55	21.8
<b>2006</b>				
Jun Qtr	733	14.1	54	21.7
Sep Qtr	734	14.0	54	21.5
Dec Qtr	752	14.3	52	20.4
<b>2007</b>				
Mar Qtr	743	14.1	53	20.8
Jun Qtr	769	14.7	66	25.4
Apr	766	14.6	63	24.0
May	763	14.5	67	25.7
Jun	780	14.9	69	26.5

(a) Periodic detention is a form of custody only used in NSW and the ACT.

(b) Imprisonment rates for the June quarter 2007 have been calculated using preliminary ERP rebased on the 2006 Census of Population and Housing - see Explanatory Notes, paragraphs 25 and 26.

(c) ACT has reviewed the way it treats, and counts, periodic detention orders that have been breached. From the September quarter 2005 data may not be comparable with that previously published - see Explanatory Notes, paragraph 42.

(d) Average daily number.

(e) Rate per 100,000 adult population.

FEDERAL SENTENCED PERSONS IN FULL-TIME CUSTODY, By sex(a)(b)

	NSW	Vic.	Qld	SA	WA	Tas.	NT	ACT	Aust.
MALES (NUMBER ON FIRST DAY OF MONTH)									
<b>2004</b>	319	70	79	13	94	6	12	4	596
<b>2005</b>	322	73	68	12	77	8	11	4	575
<b>2006</b>	334	76	57	12	64	9	12	3	565
<b>2006</b>									
Jun Qtr	335	74	55	15	69	10	14	3	574
Sep Qtr	338	80	56	8	60	8	12	3	565
Dec Qtr	331	75	61	11	55	7	10	3	554
<b>2007</b>									
Mar Qtr	333	74	64	7	54	3	16	3	554
Jun Qtr	338	77	63	10	49	2	18	5	561
FEMALES (NUMBER ON FIRST DAY OF MONTH)									
<b>2004</b>	40	7	12	1	11	3	3	1	79
<b>2005</b>	48	6	15	4	9	2	1	1	85
<b>2006</b>	51	5	17	3	10	5	2	—	93
<b>2006</b>									
Jun Qtr	47	5	18	3	10	5	2	—	91
Sep Qtr	54	5	17	4	9	4	3	—	95
Dec Qtr	56	7	16	3	10	6	1	—	98
<b>2007</b>									
Mar Qtr	56	6	15	2	8	3	1	—	91
Jun Qtr	55	6	14	2	7	2	—	—	87
PERSONS (NUMBER ON FIRST DAY OF MONTH)									
<b>2004</b>	358	77	91	15	105	9	15	5	675
<b>2005</b>	369	79	83	16	85	11	12	5	660
<b>2006</b>	385	81	74	15	74	14	14	3	658
<b>2006</b>									
Jun Qtr	383	79	73	19	79	15	16	3	665
Sep Qtr	392	84	74	12	68	12	15	3	660
Dec Qtr	387	82	76	14	65	13	11	3	652
<b>2007</b>									
Mar Qtr	388	80	79	9	61	7	17	3	645
Jun Qtr	393	83	77	12	56	4	18	5	648
Apr	396	85	77	9	57	np	20	np	651
May	391	81	78	11	56	np	13	np	639
Jun	391	82	77	15	56	np	21	np	654

— nil or rounded to zero (including null cells)

np not available for publication but included in totals where applicable, unless otherwise indicated

- (a) Counts reflect the state or territory in which a prisoner was sentenced, not where they were held in custody.
- (b) Figures for the quarter and year for the first day of the month counts are calculated as a simple average – see Explanatory Notes, paragraph 5.



## PERSONS IN COMMUNITY-BASED CORRECTIONS, By sex(a)(b)

	NSW	Vic. (c)	Qld	SA(d)	WA	Tas.	NT	ACT	Aust. (c) (d)
MALES (NUMBER ON FIRST DAY OF MONTH)									
<b>2004</b>	14 413	6 452	9 128	4 758	4 132	816	913	937	41 549
<b>2005</b>	15 419	6 805	9 135	4 628	4 314	850	975	954	43 081
<b>2006</b>	15 140	6 214	9 468	4 552	4 203	935	1 011	914	42 438
<b>2006</b>									
Jun Qtr	15 310	6 237	9 542	4 545	4 227	921	990	888	42 661
Sep Qtr	15 228	5 920	9 404	4 585	4 170	942	1 029	931	42 208
Dec Qtr	15 054	5 958	9 515	4 578	4 058	959	1 041	953	42 116
<b>2007</b>									
Mar Qtr	15 094	6 077	9 377	4 568	4 063	971	1 054	942	42 146
Jun Qtr	15 253	6 134	9 715	4 563	4 034	916	1 037	951	42 603
Apr	15 252	6 035	9 658	4 561	4 051	918	1 043	935	42 453
May	15 244	6 180	9 706	4 540	4 038	917	1 035	968	42 628
Jun	15 263	6 186	9 782	4 587	4 012	913	1 033	951	42 727
FEMALES (NUMBER ON FIRST DAY OF MONTH)									
<b>2004</b>	2 522	1 386	2 449	1 082	1 198	188	129	164	9 118
<b>2005</b>	2 718	1 517	2 532	1 033	1 239	217	135	174	9 565
<b>2006</b>	2 649	1 345	2 656	1 045	1 192	249	144	168	9 447
<b>2006</b>									
Jun Qtr	2 649	1 340	2 666	1 036	1 200	252	142	171	9 455
Sep Qtr	2 659	1 239	2 649	1 051	1 187	246	147	176	9 353
Dec Qtr	2 670	1 317	2 675	1 079	1 178	257	141	161	9 478
<b>2007</b>									
Mar Qtr	2 698	1 342	2 589	1 066	1 182	265	141	152	9 436
Jun Qtr	2 731	1 394	2 650	1 090	1 121	250	138	148	9 521
Apr	2 715	1 357	2 643	1 078	1 155	248	136	145	9 477
May	2 713	1 388	2 659	1 102	1 093	255	140	147	9 497
Jun	2 764	1 436	2 648	1 089	1 115	248	137	151	9 588
PERSONS (NUMBER ON FIRST DAY OF MONTH) (e)									
<b>2004</b>	17 005	8 119	11 577	5 870	5 330	1 004	1 042	1 102	51 049
<b>2005</b>	18 200	8 384	11 667	5 672	5 553	1 067	1 110	1 128	52 782
<b>2006</b>	17 843	7 601	12 124	5 597	5 395	1 184	1 155	1 082	51 981
<b>2006</b>									
Jun Qtr	18 011	7 620	12 208	5 582	5 427	1 173	1 132	1 059	52 212
Sep Qtr	17 941	7 193	12 053	5 635	5 357	1 187	1 176	1 107	51 649
Dec Qtr	17 783	7 313	12 190	5 657	5 236	1 216	1 182	1 114	51 690
<b>2007</b>									
Mar Qtr	17 860	7 449	11 966	5 635	5 245	1 236	1 196	1 094	51 680
Jun Qtr	18 061	7 552	12 365	5 653	5 155	1 166	1 175	1 099	52 226
Apr	18 045	7 419	12 301	5 639	5 206	1 166	1 179	1 080	52 035
May	18 033	7 590	12 365	5 643	5 131	1 172	1 175	1 115	52 224
Jun	18 106	7 647	12 430	5 677	5 127	1 161	1 170	1 102	52 420

(a) With the exception of Vic. and Tas., includes persons with breached or suspended orders.

(b) Figures for the quarter and year for first day of the month counts are calculated as a simple average - see Explanatory Notes, paragraph 5

(c) As of 1 July 2005, the definition of an adult changed in Vic. to a person aged 18 years and over - see Explanatory Notes, paragraph 33.

(d) Data movements from June quarter 2005 may be influenced by data entry delays - see Explanatory Notes, paragraph 38.

(e) Includes persons whose sex is unknown.

## COMMUNITY-BASED CORRECTIONS RATES, By sex(a)(b)(c)

	NSW	Vic. (d)	Qld	SA(e)	WA	Tas.	NT	ACT	Aust. (d) (e)
MALES (RATE PER 100,000 ADULT POPULATION)									
<b>2004</b>	572.6	342.4	625.9	820.1	559.6	462.2	1 234.0	776.8	550.4
<b>2005</b>	606.2	359.2	610.8	790.5	572.7	475.4	1 296.4	783.2	563.3
<b>2006</b>	588.9	326.1	616.9	769.9	545.6	517.5	1 306.7	740.5	547.3
<b>2006</b>									
Jun Qtr	596.8	328.4	624.8	770.6	550.8	511.0	1 286.9	721.9	552.0
Sep Qtr	590.8	309.5	609.3	773.7	538.9	520.1	1 320.7	751.1	542.3
Dec Qtr	582.9	310.6	613.5	771.0	521.9	529.3	1 329.7	767.1	539.5
<b>2007</b>									
Mar Qtr	582.7	315.3	601.3	767.2	519.2	534.8	1 337.0	755.7	537.6
Jun Qtr	593.6	315.0	617.5	761.9	509.3	503.1	1 315.9	744.9	541.4
Apr	593.6	309.9	613.9	761.6	511.5	504.1	1 323.6	732.1	539.5
May	593.3	317.3	616.9	758.1	509.9	503.6	1 313.4	757.9	541.7
Jun	594.0	317.7	621.8	765.9	506.6	501.4	1 310.9	744.6	542.9
FEMALES (RATE PER 100,000 ADULT POPULATION)									
<b>2004</b>	97.0	70.0	164.3	179.1	160.1	101.2	196.6	130.7	116.9
<b>2005</b>	103.6	76.4	166.2	169.8	162.8	115.3	201.3	137.4	121.3
<b>2006</b>	100.0	67.4	170.6	170.4	153.8	131.2	211.0	130.8	118.4
<b>2006</b>									
Jun Qtr	100.2	67.2	171.9	169.3	155.2	132.8	209.4	133.5	118.8
Sep Qtr	100.2	61.9	169.5	171.0	152.5	129.1	215.5	137.1	116.9
Dec Qtr	100.4	65.5	170.3	175.3	150.8	134.9	205.4	125.1	118.1
<b>2007</b>									
Mar Qtr	101.2	66.5	164.0	172.8	150.5	138.9	205.5	117.9	117.2
Jun Qtr	102.2	68.6	165.2	173.9	142.5	130.1	190.2	111.7	117.3
Apr	101.6	66.8	164.8	172.0	146.8	128.9	187.9	109.6	116.7
May	101.5	68.3	165.8	175.9	138.9	132.5	193.4	111.2	117.0
Jun	103.4	70.7	165.1	173.8	141.7	128.9	189.2	114.2	118.1
PERSONS (RATE PER 100,000 ADULT POPULATION) (f)									
<b>2004</b>	332.4	210.2	392.6	495.7	358.5	276.9	745.7	447.1	332.6
<b>2005</b>	352.3	216.0	386.5	475.1	366.7	290.8	781.3	454.1	339.8
<b>2006</b>	341.9	194.7	392.2	464.7	349.0	319.5	794.1	430.1	330.4
<b>2006</b>									
Jun Qtr	345.7	195.8	396.6	464.5	352.3	317.0	782.0	422.0	332.8
Sep Qtr	343.0	183.7	388.0	466.8	345.2	319.7	804.6	438.7	327.3
Dec Qtr	339.3	186.2	390.5	467.8	335.9	327.1	805.1	440.5	326.5
<b>2007</b>									
Mar Qtr	339.7	188.9	381.3	464.7	334.5	331.9	809.8	431.4	325.2
Jun Qtr	344.5	189.8	389.2	461.3	326.5	311.4	776.9	422.8	326.7
Apr	344.2	186.5	387.1	460.1	329.7	311.3	779.8	415.5	325.5
May	344.0	190.8	389.2	460.5	325.0	312.9	777.1	428.9	326.6
Jun	345.4	192.2	391.2	463.2	324.7	310.0	773.8	423.9	327.9

(a) Imprisonment rates for the June quarter 2007 have been calculated using preliminary ERP rebased on the 2006 Census of Population and Housing - see Explanatory Notes, paragraphs 25 and 26.

(b) With the exception of Vic. and Tas., includes persons with breached or suspended orders.

(c) Figures for the quarter and year for the first day of the month are calculated as a simple average - see Explanatory Notes, paragraph 5.

(d) As of 1 July 2005 the definition of an adult changed in Vic. to persons aged 18 years and over - see Explanatory Notes, paragraph 33.

(e) Data movements from the June quarter 2005 may be influenced by data entry delays - see Explanatory Notes, paragraph 38.

(f) Includes persons whose sex is unknown.

## PERSONS IN COMMUNITY-BASED CORRECTIONS, By type of order(a)(b)(c)

	NSW	Vic. (d)	Qld(e)	SA(f)	WA(g)	Tas.	NT	ACT	Aust. (h)
RESTRICTED MOVEMENT (NUMBER ON FIRST DAY OF MONTH)									
<b>2004</b>	185	10	70	331	40	..	56	5	697
<b>2005</b>	218	21	80	362	20	..	52	2	755
<b>2006</b>	205	25	44	424	10	..	38	—	746
<b>2006</b>									
Jun Qtr	199	24	68	412	9	..	33	—	745
Sep Qtr	212	25	34	430	8	..	38	—	747
Dec Qtr	212	27	—	436	6	..	38	—	720
<b>2007</b>									
Mar Qtr	209	26	..	418	4	..	38	—	696
Jun Qtr	229	30	..	390	4	..	30	—	683
Apr	225	29	..	386	3	..	29	—	672
May	235	29	..	385	3	..	30	—	682
Jun	228	31	..	399	6	..	30	—	694

	NSW	Vic. (d)	Qld(e)	SA(f)	WA(g)	Tas.	NT	ACT	Aust. (h)
REPARATION-FINE OPTION (NUMBER ON FIRST DAY OF MONTH)									
<b>2004</b>	91	1 585	1 633	943	322	100	2	..	4 677
<b>2005</b>	128	1 735	1 488	803	279	110	1	..	4 544
<b>2006</b>	84	1 214	1 321	774	240	112	1	..	3 744
<b>2006</b>									
Jun Qtr	81	1 165	1 407	791	262	118	1	..	3 825
Sep Qtr	80	883	1 280	781	261	108	—	..	3 392
Dec Qtr	74	1 137	1 167	749	200	100	—	..	3 427
<b>2007</b>									
Mar Qtr	70	1 359	966	710	185	96	—	..	3 386
Jun Qtr	60	1 581	974	686	185	83	—	..	3 569
Apr	62	1 481	1 014	695	176	86	—	..	3 514
May	61	1 575	992	681	184	84	—	..	3 577
Jun	56	1 688	915	683	194	80	—	..	3 616

	NSW	Vic. (d)	Qld(e)	SA(f)	WA(g)	Tas.	NT	ACT	Aust. (h)
REPARATION-COMMUNITY SERVICE (NUMBER ON FIRST DAY OF MONTH)									
<b>2004</b>	4 430	1 088	1 896	1 447	2 179	421	254	116	11 830
<b>2005</b>	4 751	911	1 862	1 265	2 184	472	226	90	11 759
<b>2006</b>	4 436	876	2 045	1 125	1 967	501	198	85	11 233
<b>2006</b>									
Jun Qtr	4 545	938	2 094	1 160	1 991	507	197	84	11 516
Sep Qtr	4 372	854	2 036	1 092	1 911	490	206	84	11 044
Dec Qtr	4 215	739	1 997	1 084	1 883	529	192	96	10 733
<b>2007</b>									
Mar Qtr	4 206	689	1 854	1 078	1 806	548	218	115	10 513
Jun Qtr	4 251	673	1 832	1 031	1 654	495	234	114	10 284
Apr	4 262	673	1 844	1 039	1 691	486	238	114	10 347
May	4 250	678	1 828	1 030	1 645	502	237	118	10 288
Jun	4 240	667	1 824	1 024	1 626	497	228	111	10 217

.. not applicable

— nil or rounded to zero (including null cells)

- (a) If a person has more than one type of order, they are counted against each order in this table. If a person has more than one order of the same order type, they are counted only once in the order type.
- (b) With the exception of Vic. and Tas., includes persons with breached or suspended orders.
- (c) Figures for the quarter and year for first day of the month counts are calculated as a simple average – see Explanatory Notes, paragraph 5.
- (d) As of 1 July 2005, the definition of an adult changed in Vic. to a person aged 18 years and over – see Explanatory Notes, paragraph 33.

(e) From July 2006, restricted movement and parole orders have been affected by legislative changes – see Explanatory Notes, paragraph 36.

(f) Data movements from the June quarter 2005 may be influenced by data entry delays – see Explanatory Notes, paragraph 38.

(g) Prior to the September quarter 2004, counts of restricted movement included conditional bail orders. These are now included in bail orders – see Explanatory Notes, paragraph 39.

(h) See footnotes d, e, f and g.

	NSW	Vic.(d)	Qld(e)	SA(f)	WA(g)	Tas.	NT	ACT	Aust.(h)
SUPERVISION (COMPLIANCE)–PAROLE (NUMBER ON FIRST DAY OF MONTH)									
<b>2004</b>	3 756	1 465	932	949	1 255	95	153	113	8 719
<b>2005</b>	4 155	1 576	908	920	1 332	91	140	141	9 262
<b>2006</b>	3 949	1 460	975	894	1 279	86	113	136	8 890
<b>2006</b>									
Jun Qtr	3 967	1 482	914	893	1 316	87	111	136	8 905
Sep Qtr	3 949	1 423	919	888	1 246	81	107	135	8 747
Dec Qtr	3 994	1 395	1 139	894	1 192	75	109	137	8 935
<b>2007</b>									
Mar Qtr	3 985	1 416	1 532	915	1 207	76	106	125	9 362
Jun Qtr	4 015	1 413	2 028	898	1 104	79	97	115	9 749
Apr	3 996	1 400	1 868	914	1 126	80	97	114	9 595
May	4 011	1 432	2 032	903	1 107	77	100	116	9 778
Jun	4 037	1 406	2 185	877	1 080	79	95	116	9 875

	NSW	Vic.(d)	Qld(e)	SA(f)	WA(g)	Tas.	NT	ACT	Aust.(h)
SUPERVISION (COMPLIANCE)–BAIL (NUMBER ON FIRST DAY OF MONTH)									
<b>2004</b>	275	..	..	571	154	..	5	179	1 184
<b>2005</b>	218	..	..	780	231	..	4	194	1 428
<b>2006</b>	214	..	..	888	243	..	4	174	1 523
<b>2006</b>									
Jun Qtr	215	..	..	857	266	..	4	165	1 507
Sep Qtr	214	..	..	904	248	..	4	177	1 546
Dec Qtr	222	..	..	943	224	..	4	199	1 592
<b>2007</b>									
Mar Qtr	226	..	..	1 012	250	..	7	199	1 694
Jun Qtr	224	..	..	1 042	250	..	8	204	1 728
Apr	210	..	..	1 012	261	..	8	201	1 692
May	228	..	..	1 047	247	..	9	209	1 740
Jun	235	..	..	1 068	241	..	6	203	1 753

	NSW	Vic.(d)	Qld(e)	SA(f)	WA(g)	Tas.	NT	ACT	Aust.(h)
SUPERVISION (COMPLIANCE)–SENTENCED PROBATION (NUMBER ON FIRST DAY OF MONTH)									
<b>2004</b>	10 285	4 233	7 553	2 491	3 396	516	608	815	29 897
<b>2005</b>	10 861	4 361	8 014	2 598	3 617	539	721	817	31 528
<b>2006</b>	10 923	4 294	8 855	2 631	3 556	642	837	784	32 523
<b>2006</b>									
Jun Qtr	11 010	4 221	8 856	2 608	3 513	623	818	777	32 427
Sep Qtr	11 075	4 190	8 870	2 651	3 534	654	861	805	32 640
Dec Qtr	10 961	4 436	9 018	2 695	3 525	660	878	792	32 965
<b>2007</b>									
Mar Qtr	11 044	4 152	8 710	2 698	3 537	672	870	792	32 475
Jun Qtr	11 183	4 062	8 613	2 767	3 629	662	851	804	32 571
Apr	11 191	4 037	8 683	2 747	3 629	658	853	790	32 588
May	11 129	4 073	8 597	2 759	3 604	659	847	816	32 484
Jun	11 228	4 077	8 558	2 796	3 654	668	852	807	32 640

.. not applicable

- (a) If a person has more than one type of order, they are counted against each order in this table. If a person has more than one order of the same order type, they are counted only once in the order type.
- (b) With the exception of Vic. and Tas., includes persons with breached or suspended orders.
- (c) Figures for the quarter and year for first day of the month counts are calculated as a simple average – see Explanatory Notes, paragraph 5.
- (d) As of 1 July 2005, the definition of an adult changed in Vic. to a person aged 18 years and over – see Explanatory Notes, paragraph 33.

- (e) From July 2006, restricted movement and parole orders have been affected by legislative changes – see Explanatory Notes, paragraph 36.
- (f) Data movements from the June quarter 2005 may be influenced by data entry delays – see Explanatory Notes, paragraph 38.
- (g) Prior to the September quarter 2004, counts of restricted movement included conditional bail orders. These are now included in bail orders – see Explanatory Notes, paragraph 39.
- (h) See footnotes d, e, f and g.

## EXPLANATORY NOTES

### INTRODUCTION

**1** This publication presents statistical series on persons held in either adult corrective services custody or who are serving adult community-based orders in Australia. It contains data on the number of persons by their sex, Indigenous status, type of custody, legal status and sentence type; the number of sentenced persons received into corrective services custody each month; and the number of federal prisoners.

**2** Statistics presented in this publication are compiled in three ways:

- Average daily prisoner population: Counts taken on each day of the month are summed and divided by the number of days in that month to determine the average daily prisoner population for that month. The average daily periodic detainee population is a count of persons on periodic detention on each day a centre is open, divided by the number of days a centre is open.
- Sentenced prisoner reception figures: Counts are provided each month on the number of receptions where a prisoner is received as a sentenced prisoner. This includes prisoners with a change of legal status from unsentenced to sentenced.
- First day of the month prisoner population: Counts of prisoner populations, taken on or near the first day of the month (see Explanatory Notes, paragraphs 4 and 5), and counts of persons serving community-based corrections orders.

**3** Although national standards and classifications are used in the compilation of these statistics, some discrepancies remain between the states and territories. These are due to legislative and procedural differences between jurisdictions and the way that these differences are reflected in agencies' administrative data systems. As part of its quality assurance strategy, the ABS is working with corrective services agencies to minimise the effect of these differences.

### REFERENCE PERIOD/DATE

**4** The reference period for average daily prisoner population statistics and sentenced reception counts is the complete reference month. Prior to the December quarter 2004, average daily statistics for Australian Capital Territory prisoners held in New South Wales could not be supplied, and a single count taken on a specific day of the month was used instead. The reference date for all other figures is the first day of the reference month. However, not all states and territories report strictly according to this 'first day of the month' rule:

- The Western Australian, Victorian and Australian Capital Territory prisoners in New South Wales prisons populations are counted as at midnight on the last day of the month. In these cases the figures provided are taken to represent the prison population at the beginning of the following month to align with practices in other states and territories.
- Prior to the September quarter 2004, the New South Wales prison population was counted on the last Sunday of the month. The New South Wales community-based corrections population is counted on the first day of the month.

**5** Calculation of figures for the entire quarter and entire year varies depending on the counting unit and method of counting prisoners:

- Average daily figures: Figures are calculated by weighting the average according to the number of days in each month or year.
- First day of the month: Figures are simple averages. For quarterly figures, the sum of the monthly data is divided by three; for yearly figures, the figures for each month are added and the total divided by twelve.
- Sentenced receptions: Figures are totals of each month.
- These figures may be subject to rounding.

### SCOPE

**6** The scope of the statistics in this publication includes all persons remanded or sentenced to adult custodial corrective services agencies (including Work Outreach Camps and Community Custody Centres in Queensland), or who are serving adult community-based orders in each state and territory in Australia.

## EXPLANATORY NOTES *continued*

### SCOPE *continued*

**7** Counts of prisoners in the following custodial facilities are included in the collection:

- gazetted prisons in all jurisdictions
- periodic detention centres in New South Wales and the Australian Capital Territory
- community custody centres and work outreach camps in Queensland
- cells in court complexes administered by corrective services in New South Wales
- transitional centres in New South Wales
- lock-ups in Western Australia operated by the police but designated as a prison by the Chief Executive Officer of Corrective Services.

**8** The prisons and community corrections collection excludes the following custodial facilities:

- police lockups, police prisons and cells in court complexes not administered and controlled by corrective services
- gazetted police prisons in the Northern Territory
- juvenile detention centres, including those under the authority of adult corrective services
- immigration detention centres
- military prisons.

**9** This collection includes counts of persons remanded or sentenced to adult custody facilities, or directed to serve community based orders administered by adult corrective services agencies. In all states and territories except Queensland, persons are considered adults if aged 18 years and over. In Queensland persons are considered adults if aged 17 years and over. The vast majority of persons counted in the collection are adults. However, juveniles may be included in exceptional circumstances.

**10** Since December 2004, the Kariiong Juvenile Correctional Centre in New South Wales has operated under the authority of adult corrective services. The population at Kariiong Juvenile Correctional Centre may include adult persons as well as juveniles. New South Wales includes juveniles based in Kariiong in this collection, however, this facility accounts for less than 0.5% of the New South Wales prisoner population.

**11** Federal prisoners include those persons charged and sentenced under a Commonwealth statute, and those persons who are charged and sentenced under the laws of another country but transferred to an Australian prison to serve their sentence under the *International Transfer of Prisoners Act 1997* (Cwlth). To give practical effect to this legislation in Australia, the framework was introduced in January 2003. For the purposes of this publication, federal sentenced prisoners are those persons who are recognised by the Criminal Law Division of the Australian Government Attorney-General's Department as having been charged and sentenced under a Commonwealth statute, or transferred from another country to serve their sentence in Australia.

**12** With the exception of Victoria and Tasmania, community-based corrections includes those persons with breached or suspended orders.

### DATA SOURCE

**13** Statistics in this publication are derived from information provided to the ABS from administrative records held by corrective services agencies within each state and territory. Statistics on federal prisoners are derived from records kept by the Criminal Law Division of the Australian Government Attorney-General's Department.

### COUNTING RULES

**14** Statistics for persons held in custody are presented by the state or territory in which they were held and therefore may not be the sentencing jurisdiction. The only exception to this are data for federal sentenced prisoners. These are presented by the state or territory in which they were sentenced, not where they were held in custody.

## EXPLANATORY NOTES *continued*

### COUNTING RULES *continued*

**15** Sentenced prisoners who have other offences that are unsentenced are counted as sentenced. Prisoners may be unsentenced because they are awaiting the outcome of their trial, convicted but awaiting sentence, or awaiting deportation.

**16** If an offender has two or more different types of community-based orders operating simultaneously, then each order will be counted. If two or more community-based orders are of the same type, these orders together will only be counted as one order.

### INDIGENOUS IDENTIFICATION

**17** In all states and territories persons are asked during entry into custody whether they are of Aboriginal or Torres Strait Islander origin. In states other than Victoria, it is uncommon for corrective services agencies to collect Indigenous status information from sources other than the person's own identification. In Victoria, Indigenous status data can also be accessed from data collected from other justice sources.

**18** Some persons in custody are recorded with an unknown Indigenous status on the information systems of corrective services agencies as their status has not been able to be obtained. Persons with Indigenous status unknown are excluded from tables 6, 7, 12 and 13. Counts of persons with an unknown Indigenous status are included in all other tables. Unknowns account for just over 1% of all records.

### AUSTRALIAN CAPITAL TERRITORY PRISONERS

**19** Persons sentenced to full-time custody by the Australian Capital Territory are usually held in New South Wales prisons. The Australian Capital Territory has two remand centres for unsentenced prisoners and a periodic detention centre. During 2000 the Australian Capital Territory commenced detaining prisoners sentenced for fine default only at their remand centres. Unsented Australian Capital Territory prisoners may also be detained in New South Wales prisons.

**20** To provide greater understanding of the number of prisoners attributed to the Australian Capital Territory, while presenting an accurate picture of the New South Wales prisoner population, statistics relating to Australian Capital Territory prisoners in New South Wales prisons are presented as a subset of the New South Wales figures.

**21** Imprisonment rate data for the Australian Capital Territory are included in the publication and are calculated on the basis of the total number of Australian Capital Territory prisoners (i.e. Australian Capital Territory prisoners held in New South Wales prisons, and Australian Capital Territory prisoners held in the Australian Capital Territory) divided by the estimated resident Australian Capital Territory adult population and multiplied by 100,000. For New South Wales, the imprisonment rate is based on the count of New South Wales prisoners, excluding Australian Capital Territory prisoners held in New South Wales prisons, divided by the estimated resident New South Wales adult population and multiplied by 100,000. Time series data have also been derived on this basis.

### RATES

**22** Imprisonment and community-based corrections rates enable comparisons of prisoner numbers to be made across states and territories. Prisoner and community-based corrections rates are expressed per 100,000 adult population. Imprisonment rates are calculated based on two different counting concepts (average daily and first day of the month), as a result there may be variations in imprisonment rates presented in this publication.

**23** In this publication the population figures used in the calculation of rates are for persons aged 18 years and over for all states and territories except Queensland where the population is persons aged 17 years and over (see Explanatory Notes, paragraph 9).

**24** Rates for the total adult prisoner population and persons in community-based corrections are calculated using the estimated resident population (ERP) for each of the states and territories. All estimates for the Australian Capital Territory exclude Jervis Bay Territory. All estimates for Australia exclude the external territories of Christmas Island

## EXPLANATORY NOTES *continued*

### RATES *continued*

and the Cocos (Keeling) Island. As the population changes over time the denominator used for the calculation of rates varies, depending on the reference period. The most current ERP data available at the time of publication are used to calculate rates as follows:

- for the March quarter, ERP is from the previous September quarter;
- for the June quarter, ERP is from the previous December quarter;
- for the September quarter, ERP is from the previous March quarter;
- for the December quarter, ERP is from the previous June quarter; and
- annual rates are an average of the rates of the contributing quarters.

**25** The ERP series are revised every five years to incorporate additional information available from the latest Census of Population and Housing. In the current quarter, preliminary population data for the recent intercensal period (2001-2006) has been updated using information from the 2006 Census of Population and Housing. Rates presented in this issue have been calculated as follows:

- June quarter 2007 rates (except for Indigenous rates) are calculated using preliminary rebased December quarter ERP, that is, December quarter ERP adjusted using information collected in the 2006 Census of Population and Housing;
- All other data are calculated using ERP which is based on the 2001 Census of Population and Housing.

**26** The impact of using the rebased preliminary ERP compared to ERP based on the 2001 Census of Population and Housing at the national level is negligible. Final ERP for the 5-year intercensal period is expected to be available in June 2008, at which point the historical rates will be revised in this publication. For population estimates and information on the methodology used to produce the ERP, see *Australian Demographic Statistics* (cat. no. 3101.0).

### Indigenous imprisonment rates

**27** Rates for the Indigenous adult population in this publication are based on the low series projections for 30 June of the current calendar year (refer to *Experimental Estimates and Projections, Aboriginal and Torres Strait Islander Australians, 30 June 1991 to 30 June 2009* (cat. no. 3238.0)). These projections are based on the 2001 Census of Population and Housing. New series of Indigenous population projections are scheduled for release in 2009 and will be based on the 2006 Census of Population and Housing.

**28** The low series are one of two series of these projections that have been published for the years 2002 to 2009.

- The low series assumes no 'unexplained growth' – that is, the Indigenous population recorded in the 2001 Census of Population and Housing is projected to change only as a result of births and deaths (natural increase) and, for the states and territories, as a result of interstate migration.
- The high series assumes that there will be 'unexplained growth' in the Indigenous population – that is, the Indigenous population is projected to change as a result of an unexplained component in addition to the effects of natural increase and interstate migration. The size of the unexplained component is based on the 'unexplained growth' observed between the 1996 and 2001 Censuses.

**29** The decision to use the low series as the denominator in the calculation of Indigenous imprisonment rates from 2002 followed consultation with the National Corrective Services Statistics Unit Advisory Group and other stakeholders.

### SIGNIFICANT EVENTS

#### *New South Wales*

**30** The administrative classification of the following NSW correctional facilities was altered at 1 July 2005: Cooma, Dilwynia, Parramatta and Berrima. These facilities changed classification from 'open' to 'secure' to reflect alterations in the profile of inmates held, and the operational requirements of those centres. As such, the proportion of persons in secure and open custody altered in the September quarter 2005 compared to previous quarters.



## EXPLANATORY NOTES *continued*

### *New South Wales continued*

**31** From January 2004, New South Wales custodial data revised to include prisoners in court cells administered by corrective services and transitional centres.

### *Victoria*

**32** In December 2004 Victoria's Beechworth Prison closed while a new correctional facility (Beechworth Correctional Centre) opened in February 2005. The old Beechworth Prison was classified as medium security and the new Correctional Centre is classified as minimum security. Data previously published for secure custody were overcounted and open custody were undercounted. Data for the March and June quarters 2005 have been revised to reflect this change.

**33** On 1 July 2005 the Children and Young Persons (Age Jurisdiction) Act 2004 came into force in Victoria. This Act changed the definition of a child from a person under 17 years of age to a person under 18 years of age. As a consequence the definition of an adult also changed for corrective services data to a person aged 18 years and over. Imprisonment rates for the September and December quarters 2005, and March quarter 2006 have been revised as a consequence. Data prior to 1 July 2005 includes persons aged 17 years.

**34** In March 2006 Victoria opened Marngoneet Correctional Centre, Lara. The focus of this facility is to provide intensive treatment and offender management programs for males who have a minimum of six months of their sentence left to serve when they arrive there. The new Metropolitan Remand Centre at Ravenhall was opened in April 2006. The facility provides increased capacity to hold prisoners awaiting trial or sentencing.

**35** The State government introduced an amnesty from February 2006 to May 2006 to encourage payment of unpaid fines resulting in a decrease in the number of persons serving a community-based order for fine default, particularly for the September quarter 2006.

### *Queensland*

**36** The *Corrective Services Act 2006* came into effect in Queensland on 1 July 2006. As a result home detention community-based correction orders will no longer be a sentencing option. Under this Act, prisoners will serve their sentence either in custody or on parole in the community. Under these changes, a sentencing court must specify a parole release date for persons sentenced after 28 August 2006 to a term of imprisonment of 3 years or less (with the exception of sex offenders and serious violent offenders).

**37** In September 2005 Queensland implemented a new offender management system - the Integrated Offender Management System (IOMS). As a result data for the September quarter 2005, December quarter 2005, and March quarter 2006 were revised in June quarter 2006.

### *South Australia*

**38** Data extracted from the South Australian information system from the June quarter 2005 may be subject to data processing time lags.

### *Western Australia*

**39** A range of amendments to Western Australian corrections legislation came into effect in 2003 and 2004. Prior to the September quarter 2004, counts of restricted movement orders included conditional bail orders (that may have a restricted movement condition). All conditional bail orders are now counted as bail orders.

**40** In the June quarter 2005, Western Australia implemented a strategy to reduce the number of fine defaulters being taken into custody by offering alternative means of payment. This has resulted in a decrease in the number of sentenced receptions into custody for the September quarter 2005.

## EXPLANATORY NOTES *continued*

### Tasmania

**41** The new Risdon Prison Complex in Tasmania was opened on 28 August 2006. This complex includes the Mary Hutchison Women's Prison which was opened in May 2006. A new men's maximum/medium security facility was also built within the complex.

### Australian Capital Territory

**42** From 1 July 2005, Australian Capital Territory periodic detainees who were in breach of an order for more than three months were excluded from counts. Consequently, the periodic detainee population decreased.

### RELATED PUBLICATIONS

#### ABS Publications

**43** Other ABS publications that may be of interest include:

*Australian Demographic Statistics* (cat. no. 3101.0) – issued quarterly

*Australian Social Trends* (cat. no. 4102.0) – issued annually

*Australian Standard Offence Classification* (cat. no. 1234.0) – irregular

*Crime and Safety, Australia* (cat. no. 4509.0) – released 26 April 2006

*Criminal Courts, Australia* (cat. no. 4513.0) – issued annually

*Experimental Estimates and Projections, Aboriginal and Torres Strait Islander*

*Australians, 30 June 1991 to 30 June 2009* (cat. no. 3280.0)

*General Social Survey: Summary Results, Australia* (cat. no. 4159.0) – irregular

*Information Paper: Measuring Crime Victimisation, Australia: The Impact of*

*Different Collection Methodologies* (cat. no. 4522.0.55.001) – single issue

*Information paper: National Information Development Plan for Crime and Justice*

*Statistics 2005* (cat. no. 4520.0) – single issue

*Measures of Australia's Progress* (cat. no. 1370.0) – issued annually

*Personal Safety Survey* (cat. no. 4906.0) – released 10 August 2006

*Prisoners in Australia* (cat. no. 4517.0) – issued annually

*Recorded Crime – Victims, Australia* (cat. no. 4510.0) – issued annually

*Sexual Assault in Australia: A Statistical Overview* (cat. no. 4523.0) – single issue

*Year Book Australia* (cat. no. 1301.0) – issued annually

**44** Current publications and other products released by the ABS are listed in the *Catalogue of Publications and Products* (cat. no. 1101.0). The Catalogue is available from the ABS website <<http://www.abs.gov.au>>. The ABS also issues a daily Release Advice on the website that details products to be released in the week ahead. The National Centre for Crime and Justice Statistics releases a biannual newsletter that is published on the ABS website. The Centre can be contacted by email through <[crime.justice@abs.gov.au](mailto:crime.justice@abs.gov.au)>.

## EXPLANATORY NOTES *continued*

### Non-ABS Publications

- 45** Non-ABS sources that may be of interest include:
- Australian Institute of Criminology, *List of Publications* – irregular  
<<http://www.aic.gov.au>>
- Crime Research Centre, University of Western Australia, *Crime and Justice Statistics for Western Australia* – issued annually  
<<http://www.crc.law.uwa.edu.au>>
- Department of Corrective Services, New South Wales, *NSW Inmate Census* – irregular  
<<http://www.dcs.nsw.gov.au>>
- Department of Justice, Northern Territory, *Northern Territory Quarterly Crime and Justice Statistics* – issued quarterly  
<<http://www.nt.gov.au/justice/>>
- Department of Justice, Victoria, *Statistical Profile of the Victorian Prison System* – issued annually  
<<http://www.justice.vic.gov.au>>
- NSW Bureau of Crime Statistics and Research, *New South Wales Criminal Courts Statistics* – issued annually  
<<http://www.lawlink.nsw.gov.au>>
- Office of Crime Statistics and Research, South Australia, *Crime and Justice in South Australia* – issued annually  
<<http://www.ocsar.sa.gov.au>>
- Steering Committee for the Review of Commonwealth/State Service Provision, *Report on Government Services* – issued annually  
<<http://www.pc.gov.au/publications/index.html>>

## APPENDIX EXPERIMENTAL COMMUNITY-BASED CORRECTIONS DATA

---

### INTRODUCTION

This appendix presents experimental data for Indigenous persons in community-based corrections. Data are presented as the number of Indigenous persons on community-based corrections orders on the first day of the month.

Corrective Services agencies have undertaken significant work to improve the quality of Indigenous data over the last 12 months, hence data can now be published on an experimental basis.

# APPENDIX EXPERIMENTAL COMMUNITY-BASED CORRECTIONS DATA

*continued*

## A1 PERSONS IN COMMUNITY-BASED CORRECTIONS, By Indigenous status(a)(b)

	NSW	Vic. (c)	Qld	SA(d)	WA	Tas.	NT	ACT	Aust. (c)
INDIGENOUS (NUMBER ON FIRST DAY OF MONTH)									
<b>2005</b>	2 842	378	2 054	714	1 638	111	777	100	8 613
<b>2006</b>	2 908	324	2 146	746	1 777	141	846	81	8 969
<b>2006</b>									
Jun Qtr	2 864	308	2 193	709	1 806	145	839	75	8 939
Sep Qtr	2 908	319	2 112	785	1 792	147	866	82	9 010
Dec Qtr	3 054	314	2 134	786	1 722	134	872	86	9 101
<b>2007</b>									
Mar Qtr	3 103	312	2 132	791	1 685	140	896	93	9 154
Jun Qtr	3 176	327	2 178	800	1 629	137	884	98	9 230
Apr	3 152	306	2 160	795	1 641	136	893	92	9 175
May	3 158	319	2 184	799	1 608	136	883	103	9 190
Jun	3 219	357	2 189	807	1 638	139	875	100	9 324
NON-INDIGENOUS (NUMBER ON FIRST DAY OF MONTH)									
<b>2005</b>	14 062	7 143	9 227	4 588	3 907	756	330	806	40 817
<b>2006</b>	13 835	6 675	9 978	4 793	3 613	946	307	876	41 024
<b>2006</b>									
Jun Qtr	13 977	6 733	10 015	4 797	3 619	955	293	862	41 251
Sep Qtr	13 927	6 368	9 941	4 794	3 563	958	309	914	40 774
Dec Qtr	13 704	6 404	10 056	4 819	3 511	958	309	959	40 720
<b>2007</b>									
Mar Qtr	13 701	6 531	9 833	4 789	3 557	989	297	939	40 636
Jun Qtr	13 824	6 607	10 188	4 802	3 524	991	290	929	41 155
Apr	13 770	6 516	10 141	4 797	3 565	988	285	916	40 978
May	13 877	6 649	10 181	4 793	3 520	1 003	291	944	41 258
Jun	13 825	6 656	10 241	4 817	3 486	982	294	927	41 228
UNKNOWN (NUMBER ON FIRST DAY OF MONTH)									
<b>2005</b>	1 296	864	386	370	8	200	4	223	3 351
<b>2006</b>	1 101	602	—	58	4	97	2	125	1 988
<b>2006</b>									
Jun Qtr	1 170	578	—	76	2	73	—	122	2 022
Sep Qtr	1 107	507	—	56	2	83	—	111	1 865
Dec Qtr	1 025	595	—	52	3	124	2	69	1 869
<b>2007</b>									
Mar Qtr	1 057	606	—	54	2	107	3	62	1 891
Jun Qtr	1 061	618	—	50	2	38	1	72	1 842
Apr	1 123	597	—	47	—	42	1	72	1 882
May	998	622	—	51	3	33	1	68	1 776
Jun	1 062	634	—	53	3	40	1	75	1 868

— nil or rounded to zero (including null cells)

(a) With the exception of Vic. and Tas., includes persons with breached or suspended orders.

(b) Figures for the quarter and year for first day of the month counts are calculated as a simple average – see Explanatory Notes, paragraph 5.

(c) As of 1 July 2005, the definition of an adult changed in Vic. to a person aged 18 years and over – see Explanatory Notes, paragraph 33.

(d) Data movements from June quarter 2005 may be influenced by data entry delays – see Explanatory Notes, paragraph 38.

**APPENDIX EXPERIMENTAL COMMUNITY-BASED CORRECTIONS DATA**  
*continued*

**A1** PERSONS IN COMMUNITY-BASED CORRECTIONS, By Indigenous status(a)(b) *continued*

	NSW	Vic.(c)	Qld	SA(d)	WA	Tas.	NT	ACT	Aust.(c)
PERSONS (NUMBER ON FIRST DAY OF MONTH)									
<b>2005</b>	18 200	8 384	11 667	5 672	5 553	1 067	1 110	1 128	52 782
<b>2006</b>	17 843	7 601	12 124	5 597	5 395	1 184	1 155	1 082	51 981
<b>2006</b>									
Jun Qtr	18 011	7 620	12 208	5 582	5 427	1 173	1 132	1 059	52 212
Sep Qtr	17 941	7 193	12 053	5 635	5 357	1 187	1 176	1 107	51 649
Dec Qtr	17 783	7 313	12 190	5 657	5 236	1 216	1 182	1 114	51 690
<b>2007</b>									
Mar Qtr	17 860	7 449	11 966	5 635	5 245	1 236	1 196	1 094	51 680
Jun Qtr	18 061	7 552	12 365	5 653	5 155	1 166	1 175	1 099	52 226
Apr	18 045	7 419	12 301	5 639	5 206	1 166	1 179	1 080	52 035
May	18 033	7 590	12 365	5 643	5 131	1 172	1 175	1 115	52 224
Jun	18 106	7 647	12 430	5 677	5 127	1 161	1 170	1 102	52 420

- (a) With the exception of Vic. and Tas., includes persons with breached or suspended orders.
- (b) Figures for the quarter and year for first day of the month counts are calculated as a simple average – see Explanatory Notes, paragraph 5.
- (c) As of 1 July 2005, the definition of an adult changed in Vic. to a person aged 18 years and over – see Explanatory Notes, paragraph 33.
- (d) Data movements from June quarter 2005 may be influenced by data entry delays – see Explanatory Notes, paragraph 38.

**APPENDIX EXPERIMENTAL COMMUNITY-BASED CORRECTIONS DATA**  
*continued*

**A2** PROPORTION OF PERSONS IN COMMUNITY-BASED CORRECTIONS, By Indigenous status(a)(b)

	NSW	Vic. (c)	Qld	SA(d)	WA	Tas.	NT	ACT	Aust. (c)
INDIGENOUS (%)									
<b>2005</b>	15.6	4.5	17.6	12.6	29.5	10.4	69.9	8.8	16.3
<b>2006</b>	16.3	4.3	17.7	13.3	32.9	11.9	73.3	7.4	17.3
<b>2006</b>									
Jun Qtr	15.9	4.0	18.0	12.7	33.3	12.3	74.1	7.1	17.1
Sep Qtr	16.2	4.4	17.5	13.9	33.4	12.4	73.7	7.4	17.4
Dec Qtr	17.2	4.3	17.5	13.9	32.9	11.0	73.7	7.7	17.6
<b>2007</b>									
Mar Qtr	17.4	4.2	17.8	14.0	32.1	11.3	74.9	8.5	17.7
Jun Qtr	17.6	4.3	17.6	14.2	31.6	11.7	75.2	8.9	17.7
Apr	17.5	4.1	17.6	14.1	31.5	11.7	75.7	8.5	17.6
May	17.5	4.2	17.7	14.2	31.3	11.6	75.1	9.2	17.6
Jun	17.8	4.7	17.6	14.2	31.9	12.0	74.8	9.1	17.8
NON-INDIGENOUS (%)									
<b>2005</b>	77.3	85.2	79.1	80.9	70.4	70.8	29.7	71.4	77.3
<b>2006</b>	77.5	87.8	82.3	85.6	67.0	79.9	26.6	81.0	78.9
<b>2006</b>									
Jun Qtr	77.6	88.4	82.0	85.9	66.7	81.4	25.9	81.4	79.0
Sep Qtr	77.6	88.5	82.5	85.1	66.5	80.7	26.3	82.6	78.9
Dec Qtr	77.1	87.6	82.5	85.2	67.0	78.8	26.1	86.1	78.8
<b>2007</b>									
Mar Qtr	76.7	87.7	82.2	85.0	67.8	80.0	24.8	85.8	78.6
Jun Qtr	76.5	87.5	82.4	85.0	68.4	85.0	24.7	84.5	78.8
Apr	76.3	87.8	82.4	85.1	68.5	84.7	24.2	84.8	78.8
May	77.0	87.6	82.3	84.9	68.6	85.6	24.8	84.7	79.0
Jun	76.4	87.0	82.4	84.9	68.0	84.6	25.1	84.1	78.6
UNKNOWN (%)									
<b>2005</b>	7.1	10.3	3.3	6.5	0.1	18.7	0.4	19.7	6.3
<b>2006</b>	6.2	7.9	—	1.0	0.1	8.2	0.2	11.6	3.8
<b>2006</b>									
Jun Qtr	6.5	7.6	—	1.4	—	6.2	—	11.5	3.9
Sep Qtr	6.2	7.0	—	1.0	—	7.0	—	10.0	3.6
Dec Qtr	5.8	8.1	—	0.9	0.1	10.2	0.1	6.2	3.6
<b>2007</b>									
Mar Qtr	5.9	8.1	—	1.0	—	8.7	0.3	5.7	3.7
Jun Qtr	5.9	8.2	—	0.9	—	3.3	0.1	6.5	3.5
Apr	6.2	8.0	—	0.8	—	3.6	0.1	6.7	3.6
May	5.5	8.2	—	0.9	0.1	2.8	0.1	6.1	3.4
Jun	5.9	8.3	—	0.9	0.1	3.4	0.1	6.8	3.6

— nil or rounded to zero (including null cells)

(a) With the exception of Vic. and Tas., includes persons with breached or suspended orders.

(b) Figures for the quarter and year for first day of the month counts are calculated as a simple average – see Explanatory Notes, paragraph 5.

(c) As of 1 July 2005, the definition of an adult changed in Vic. to a person aged 18 years and over – see Explanatory Notes, paragraph 33.

(d) Data movements from June quarter 2005 may be influenced by data entry delays – see Explanatory Notes, paragraph 38.

## GLOSSARY

<b>Bail</b>	This is generally a pre-sentence option where a person is released into the community for a period before they appear in court for trial or final sentencing. Bail orders can require a financial surety to be lodged with the court, and a number of conditions including supervision and residential requirements designed to ensure the re-appearance of the person at court. Bail counts are available only in states and territories where bail orders are supervised by corrective services. Bail is a sub-category of Supervision where the person is under the supervision of corrective services ( <i>see</i> Supervision).
<b>Community-based corrections</b>	This refers to the community-based management of court-ordered sanctions, post-prison administrative arrangements and fine conversions, which principally involve the provision of one or more of the following activities: supervision, programs or community work.
<b>Community service</b>	This category of community-based corrections orders includes sentencing options requiring offenders to undertake a specified number of hours of unpaid, supervised work to benefit the community on an approved project. Community service is a sub-category of Reparation ( <i>see</i> Reparation).
<b>Corrective services custody</b>	Confinement in a place intended primarily for the purpose of confining prisoners, such as a prison, prison farm, Periodic Detention Centre or Community Custody Centre.
<b>Federal sentenced prisoner</b>	Persons charged and sentenced under a Commonwealth statute or transferred from another country to serve their sentence in Australia.
<b>Fine option</b>	A community-based sentence type where the offender is serving a sentence for default of a fine. In most jurisdictions this order type requires an offender to complete community service as a reparatory act. Fine option is a sub-category of Reparation ( <i>see</i> Reparation).
<b>Full-time prison custody</b>	A type of custody where a prisoner is required to be held in custody on a full-time basis. This includes prisons, Queensland Community Custody Centres and work outreach camps. Full-time prison custody excludes periodic detention ( <i>see</i> Periodic detention).
<b>Home detention</b>	( <i>see</i> Restricted movement)
<b>Indigenous prisoner</b>	A prisoner who identifies as being of Aboriginal or Torres Strait Islander origin, or both.
<b>Legal status</b>	A person may be either sentenced or unsentenced depending on the warrant(s) or court order(s) that provide the legal basis for the administration of the person through the criminal justice system.
<b>Open custody</b>	Refers to prisoners housed in minimum security custodial facilities that do not require them to be confined by a secure perimeter physical barrier, irrespective of whether a physical barrier exists.
<b>Parole</b>	A parole order is made following a period of imprisonment and requires an offender to be subject to supervision in the community. Additional conditions may also be applied such as programs, counselling or drug testing. Parole is a sub-category of Supervision ( <i>see</i> Supervision).
<b>Periodic detention</b>	A type of custody or order where a sentenced prisoner is required to be held in custody on a part-time basis. Currently this consists of two consecutive days in a one-week period, while remaining at liberty during the rest of the week.
<b>Prisoner</b>	A person held in custody. For the purposes of this collection, prisoners are those whose confinement is the responsibility of a corrective services agency.
<b>Remand</b>	( <i>see</i> Unsentenced)
<b>Reparation</b>	Reparation refers to all offenders with an order that requires them to undertake unpaid, justice agency-approved community service work.



## GLOSSARY *continued*

---

<b>Restricted movement</b>	This refers to persons who are subject to a system of restricted movement, including supervision and/or electronic monitoring. This category includes home detention that may restrict residence to a nominated place. Restricted movement can be either a pre-sentence or post-sentence order.
<b>Secure custody</b>	Refers to prisoners housed in medium or maximum security custodial facilities requiring them to be confined by a secure physical barrier.
<b>Sentenced</b>	A legal status indicating that a person has received a custodial or community-based order from a court in response to a conviction for an offence.
<b>Sentenced prisoner reception</b>	Refers to entry into corrective services custody from the community, having received a sentence of imprisonment as an outcome of a court proceeding; or persons who are sentenced to custody while in custody on remand (i.e. changed status from a remand to a sentenced prisoner); or persons entering custody as a result of defaulting on the payment of a fine. Sentenced prisoners in custody who receive a further sentence of imprisonment are not counted as sentenced receptions.
<b>Sentenced probation</b>	A supervision order made following an original sentence handed down in court following conviction. A probation order generally requires 'good behaviour' and compliance with the directions of supervisors. The order may also require compliance with conditions such as program attendance and residential requirements.
<b>Supervision (compliance)</b>	This includes community-based orders other than those categorised as restricted movement or reparation (e.g. parole, bail and sentenced probation).
<b>Unsentenced</b>	A legal status indicating that a person is confined to custody or supervision while awaiting the outcome of their trial.





**FOR MORE INFORMATION . . .**

*INTERNET*      **www.abs.gov.au** the ABS web site is the best place for data from our publications and information about the ABS.

*LIBRARY*      A range of ABS publications are available from public and tertiary libraries Australia wide. Contact your nearest library to determine whether it has the ABS statistics you require, or visit our web site for a list of libraries.

**INFORMATION AND REFERRAL SERVICE**

Our consultants can help you access the full range of information published by the ABS that is available free of charge from our web site, or purchase a hard copy publication. Information tailored to your needs can also be requested as a 'user pays' service. Specialists are on hand to help you with analytical or methodological advice.

*PHONE*                      1300 135 070  
*EMAIL*                      client.services@abs.gov.au  
*FAX*                              1300 135 211  
*POST*                            Client Services, ABS, GPO Box 796, Sydney NSW 2001

**FREE ACCESS TO STATISTICS**

All statistics on the ABS web site can be downloaded free of charge.

*WEB ADDRESS*      [www.abs.gov.au](http://www.abs.gov.au)



2451200006077

ISSN 1440 5997

**RRP \$27.00**